



52



ZX
520-000/1

1

FONCTION TABLEAU DE BORD

NOMENCLATURE DES PIECES
LISTE DES SCHEMAS



52

NOMENCLATURE DES PIÈCES
figurant au chapitre 52

Rep.	Désignation	Rep.	Désignation
35	Batterie		
50	Boîtier d'alimentation		
52	Boîtier interconnexions		
53	Boîtier de température d'eau		
59	Boîtier de préchauffage		
62	Boîtier de masse		
154	Capteur distance		
300	Contacteur antivol		
305	Contact fermeture porte conducteur		
306	Contact fermeture porte passager		
307	Contact fermeture porte arrière gauche		
308	Contact fermeture porte arrière droit		
315	Contact frein à main		
317	Contact niveau hydraulique		
319	Contact stop		
326	Contact de starter		
650	Jauge carburant		
671	Manocontact huile moteur		
750	Plaquettes de frein avant gauche		
751	Plaquettes de frein avant droit		
880	Rhéostat d'éclairage		
902	Sonde niveau huile moteur		
904	Sonde pression huile moteur		
915	Sonde contact de température d'eau		
918	Sonde de température d'huile		
919	Sonde de niveau d'eau moteur		
920	Sonde contact de température d'huile		
970	Thermocontact d'alerte d'eau moteur		

52



NUMERO	DESIGNATION	VALIDITE
ZX 520-000/1	Nomenclature des pièces figurant au chapitre 52 Liste des schémas figurant au chapitre 52 : Tableau de bord	
<i>Bloc compteurs</i>		
ZX 520-0/10	Schéma de principe du bloc compteurs	→ AM 95
ZX 520-0/20	Schéma de principe du bloc compteurs	AM 97
<i>Tableau de bord</i>		
ZX 520-1/10	Combiné tableau de bord tous types	→ AM 93
ZX 520-1/20	Combiné tableau de bord tous types	AM 94
ZX 520-1/30	Combiné tableau de bord tous types	AM 95
ZX 520-1/40	Combiné tableau de bord tous types	AM 96
ZX 520-1/50	Combiné tableau de bord tous types	AM 97 →
<i>Vignette portes ouvertes</i>		
ZX 521-0/10	Voyants portes mal fermées <i>Nota : si le véhicule est équipé de l'alarme série, se reporter au chapitre 67</i>	AM 94
ZX 521-0/10a	Voyants portes mal fermées <i>Nota : si le véhicule est équipé de l'alarme série, se reporter au chapitre 67</i>	AM 95
ZX 521-0/10b	Voyants portes mal fermées <i>Nota : si le véhicule est équipé de l'alarme série, se reporter au chapitre 67</i>	AM 97 →

NOTA :
a → Véhicule standard
b → ZX 5 Portes avec rétroviseurs extérieurs chauffants à réglage électrique



52

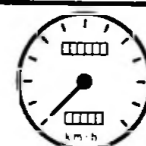


ZX
520-0/20

1

2

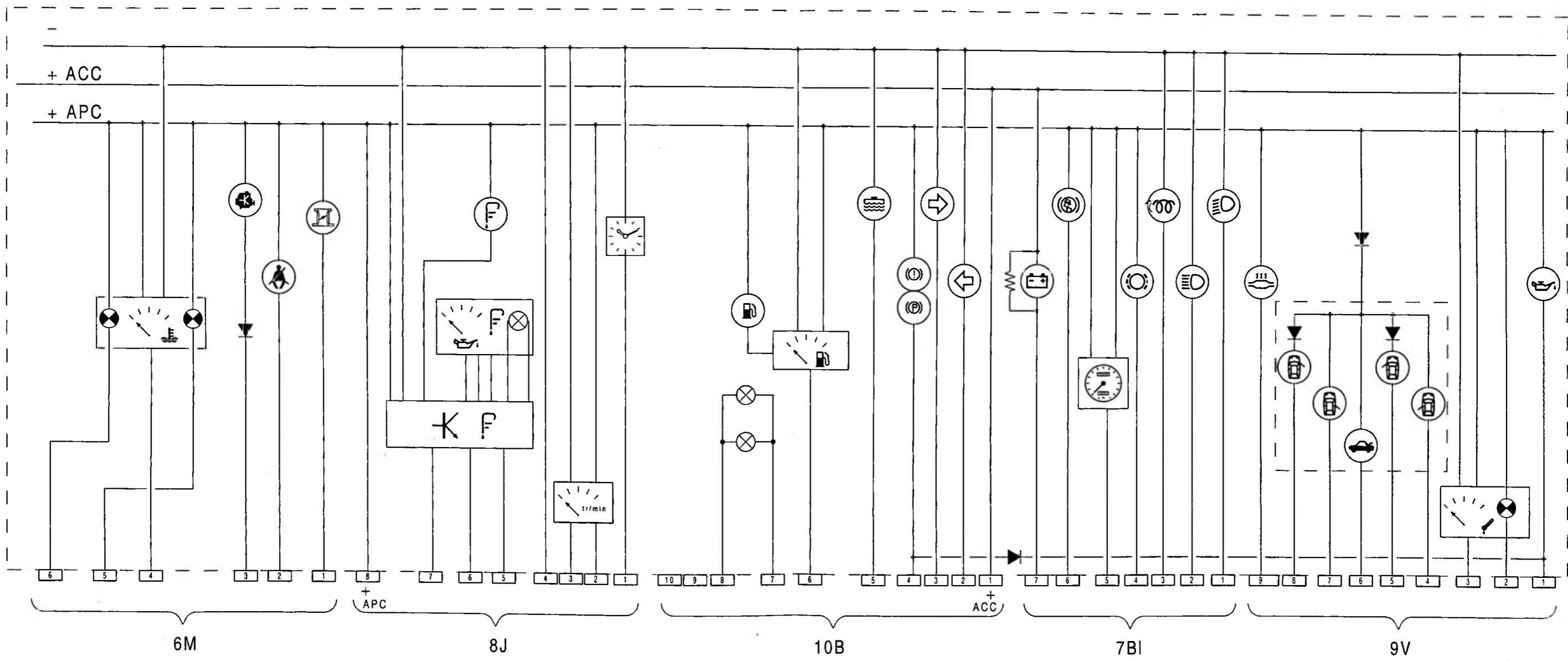
ZX
520-0/20



52



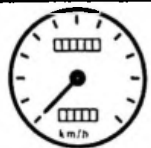
40



1 2 3 4 5 6 7 8 9 10 11 12 13 14 15 16 17 18 19 20 21 22 23 24 25 26 27 28 29 30 31 32 33 34 35 36 37 38 39 40 41 42 43 44 45 46 47 48 49 50 51 52 53 54 55 56 57 58 59 60 61 62



52

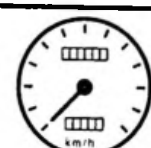


ZX
520-1/30

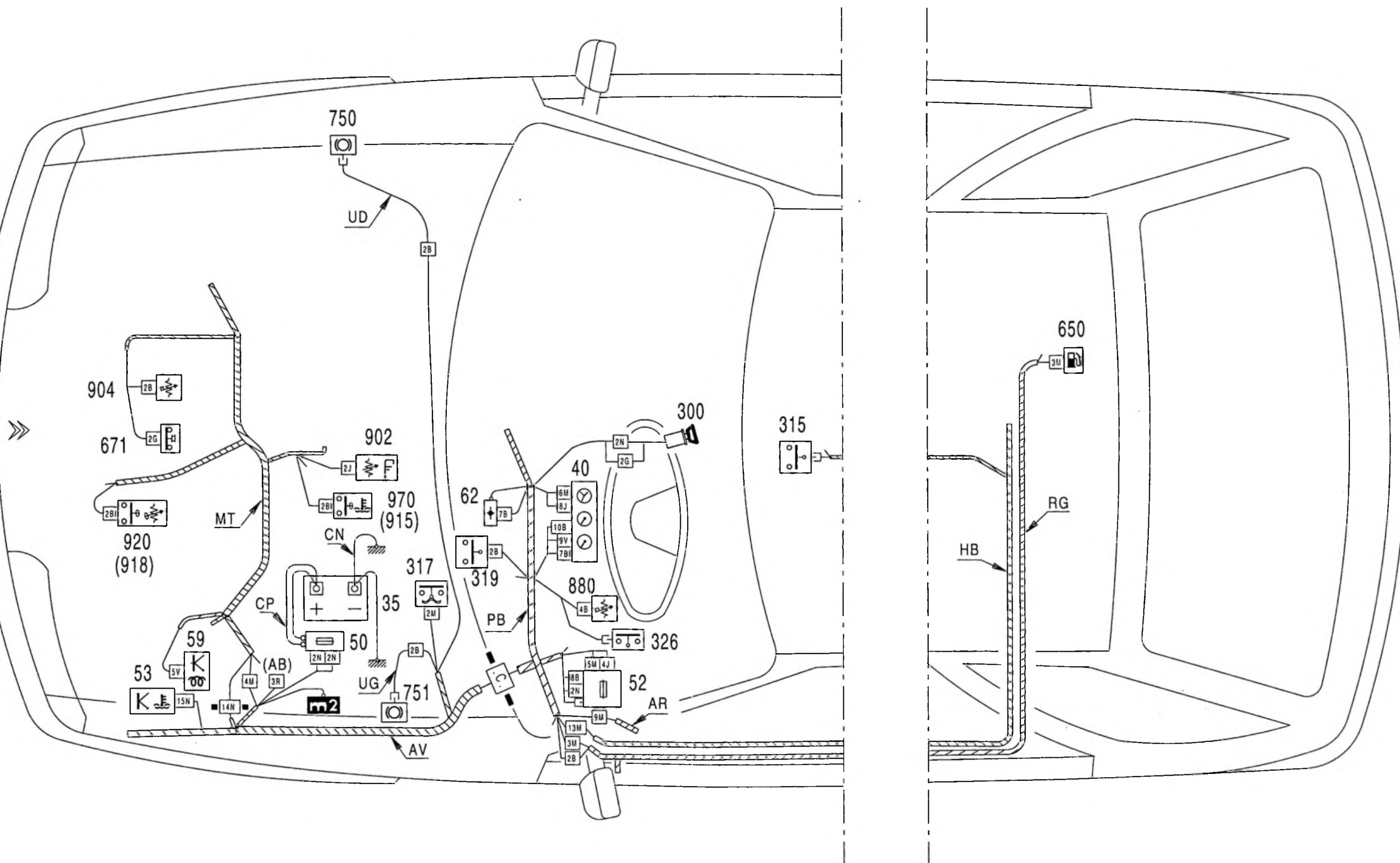
3

4

ZX
520-1/30



52



520-1/30

1 2 3 4 5 6 7 8 9 10 11 12 13 14 15 16 17 18 19 20 21 22 23 24 25 26 27 28 29 30 31 32 33 34 35 36 37 38 39 40 41 42 43 44 45 46 47 48 49 50 51 52 53 54 55 56 57 58 59 60 61 62

520-1/30



52



ZX
520-1/30

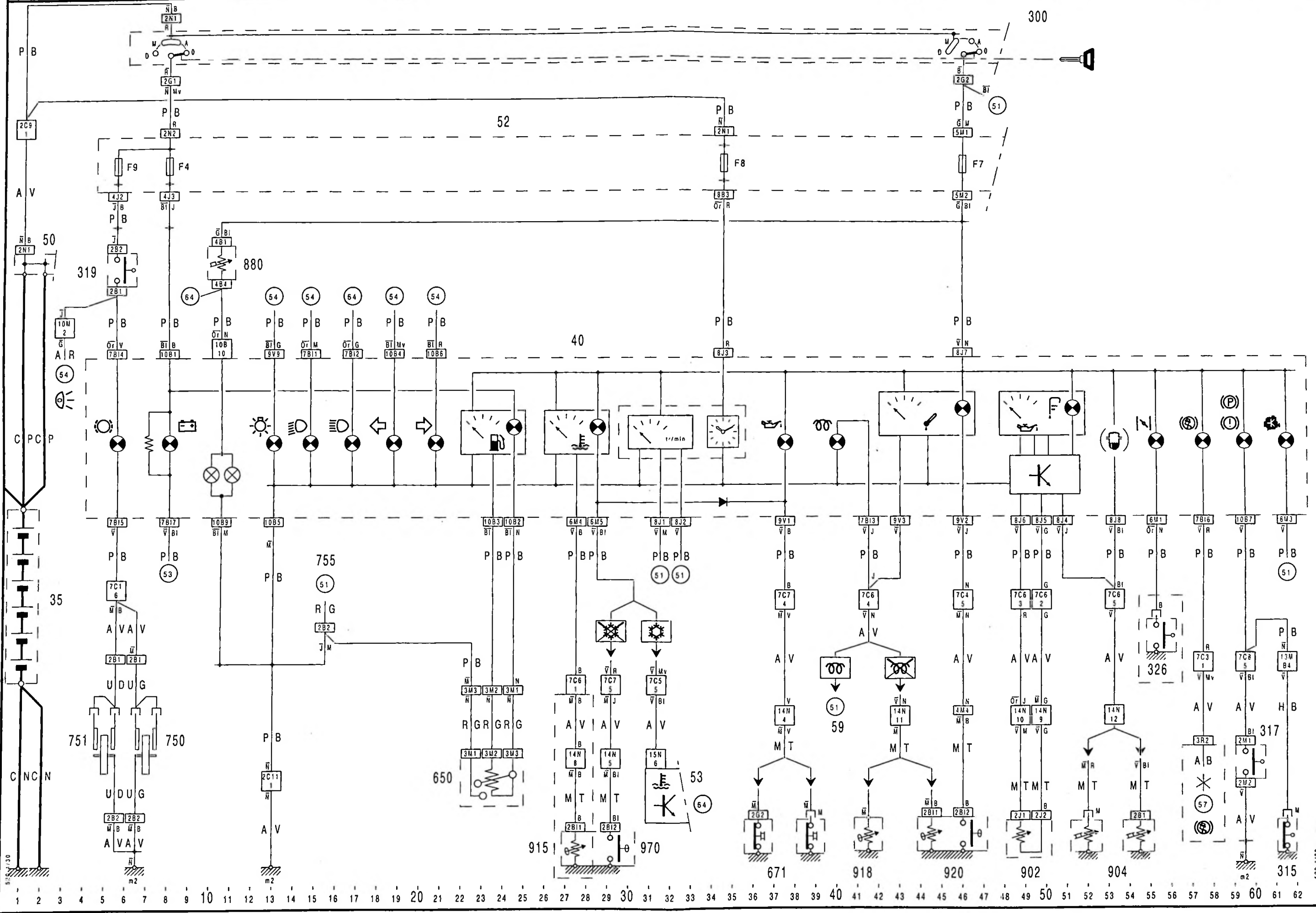
5

6

ZX
520-1/30

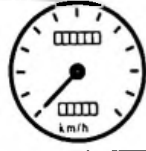


52





52

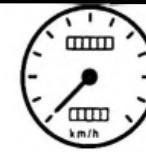


ZX
520-1/40

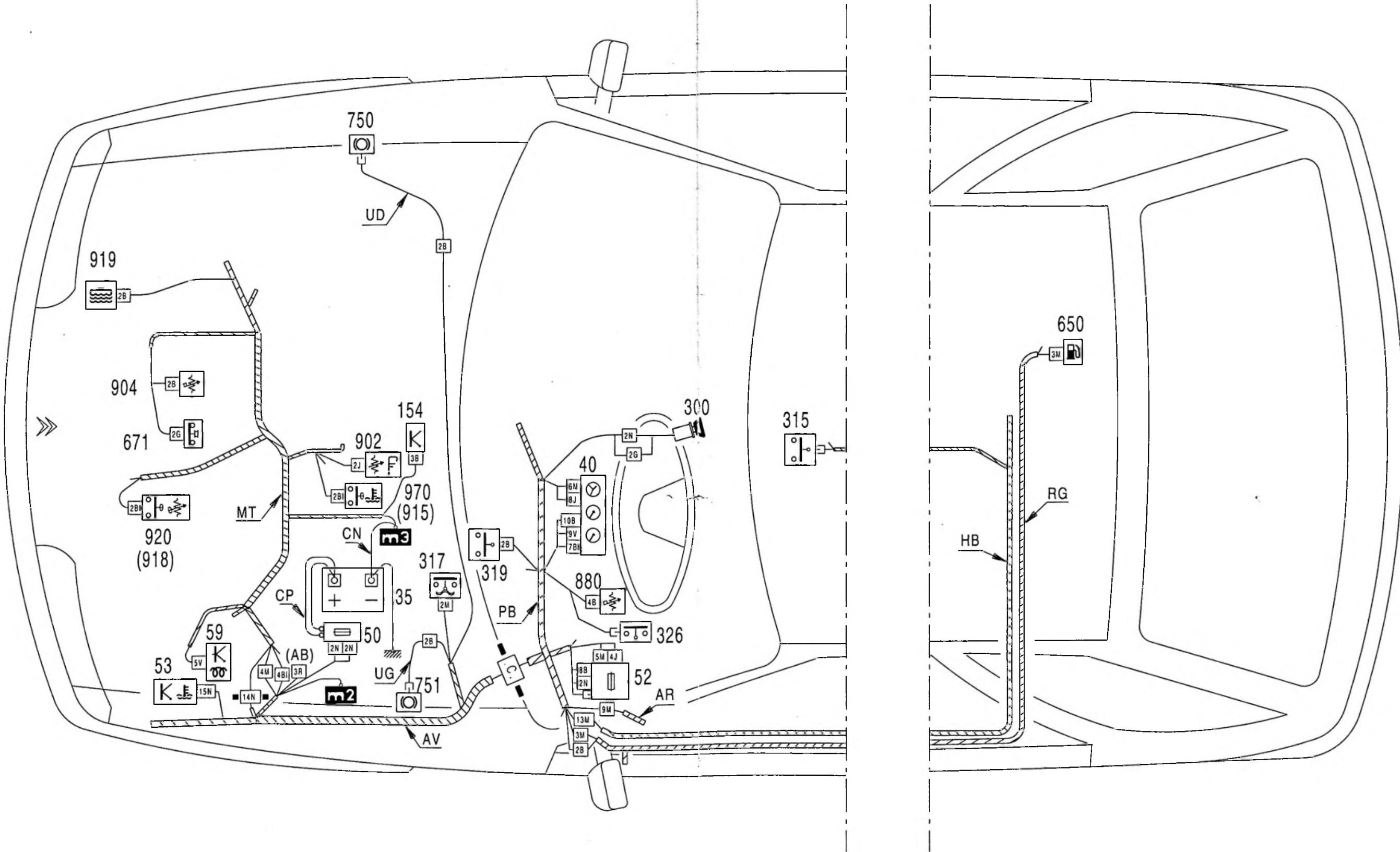
3

4

ZX
520-1/40



52



520-1/40

1 2 3 4 5 6 7 8 9 10 11 12 13 14 15 16 17 18 19 20 21 22 23 24 25 26 27 28 29 30 31 32 33 34 35 36 37 38 39 40 41 42 43 44 45 46 47 48 49 50 51 52 53 54 55 56 57 58 59 60 61 62

520-1/40



52

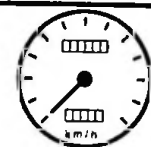


ZX
520-1/40

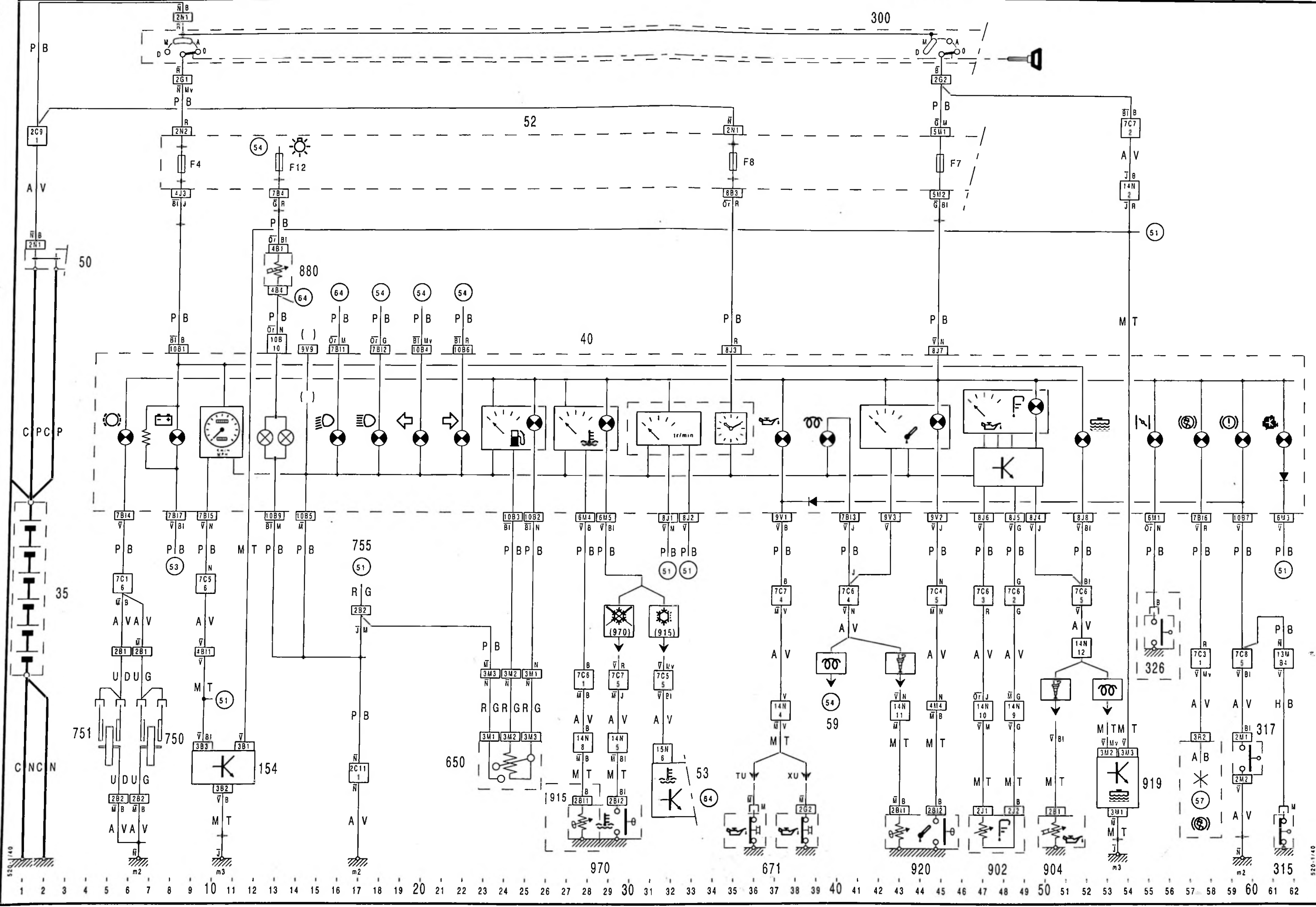
5

6

ZX
520-1/40

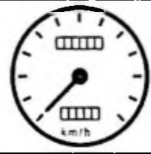


52





52

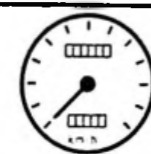


ZX
520-1/50

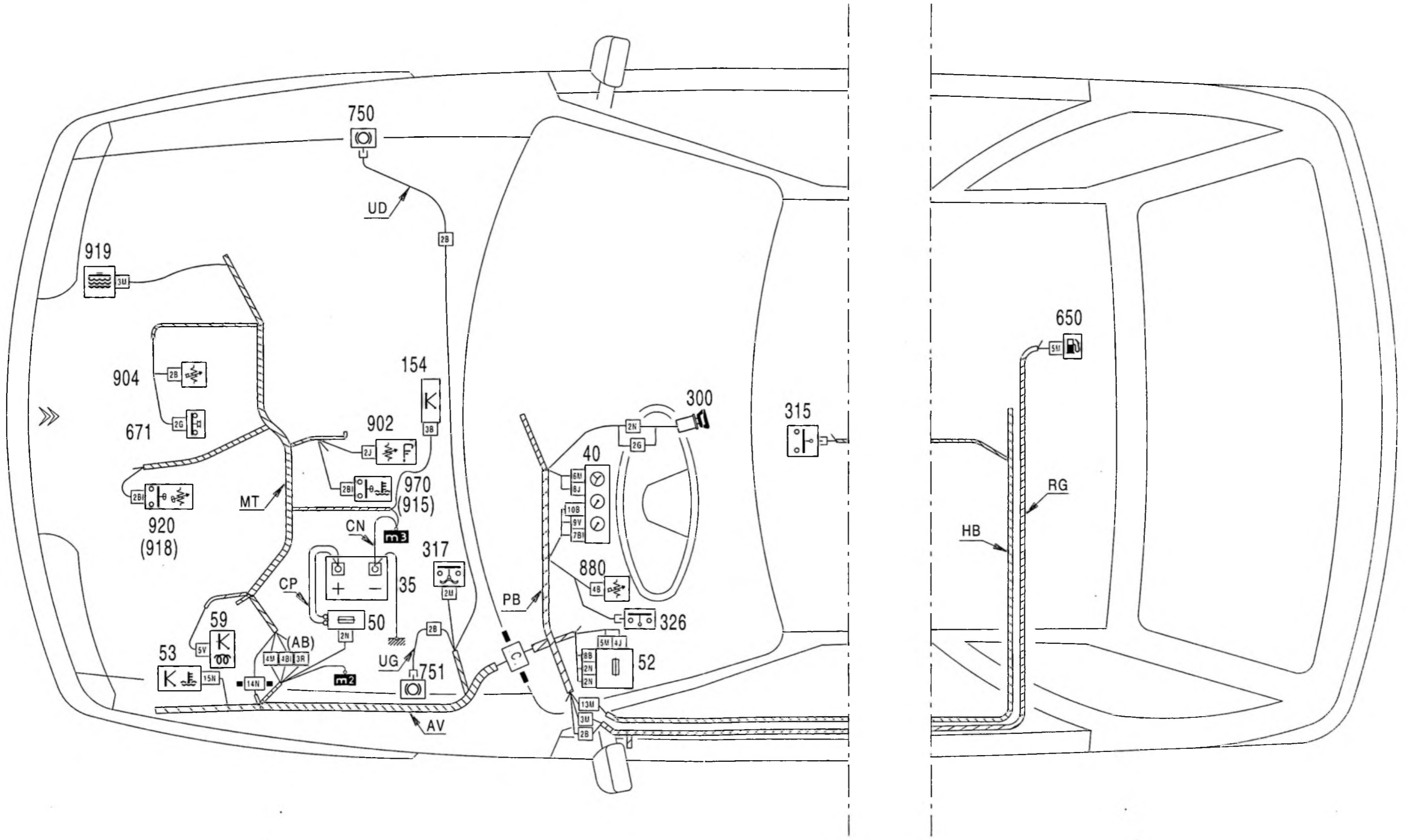
3

4

ZX
520-1/50



52



1 2 3 4 5 6 7 8 9 10 11 12 13 14 15 16 17 18 19 20 21 22 23 24 25 26 27 28 29 30 31 32 33 34 35 36 37 38 39 40 41 42 43 44 45 46 47 48 49 50 51 52 53 54 55 56 57 58 59 60 61 62



52

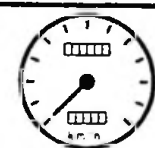


ZX
520-1/50

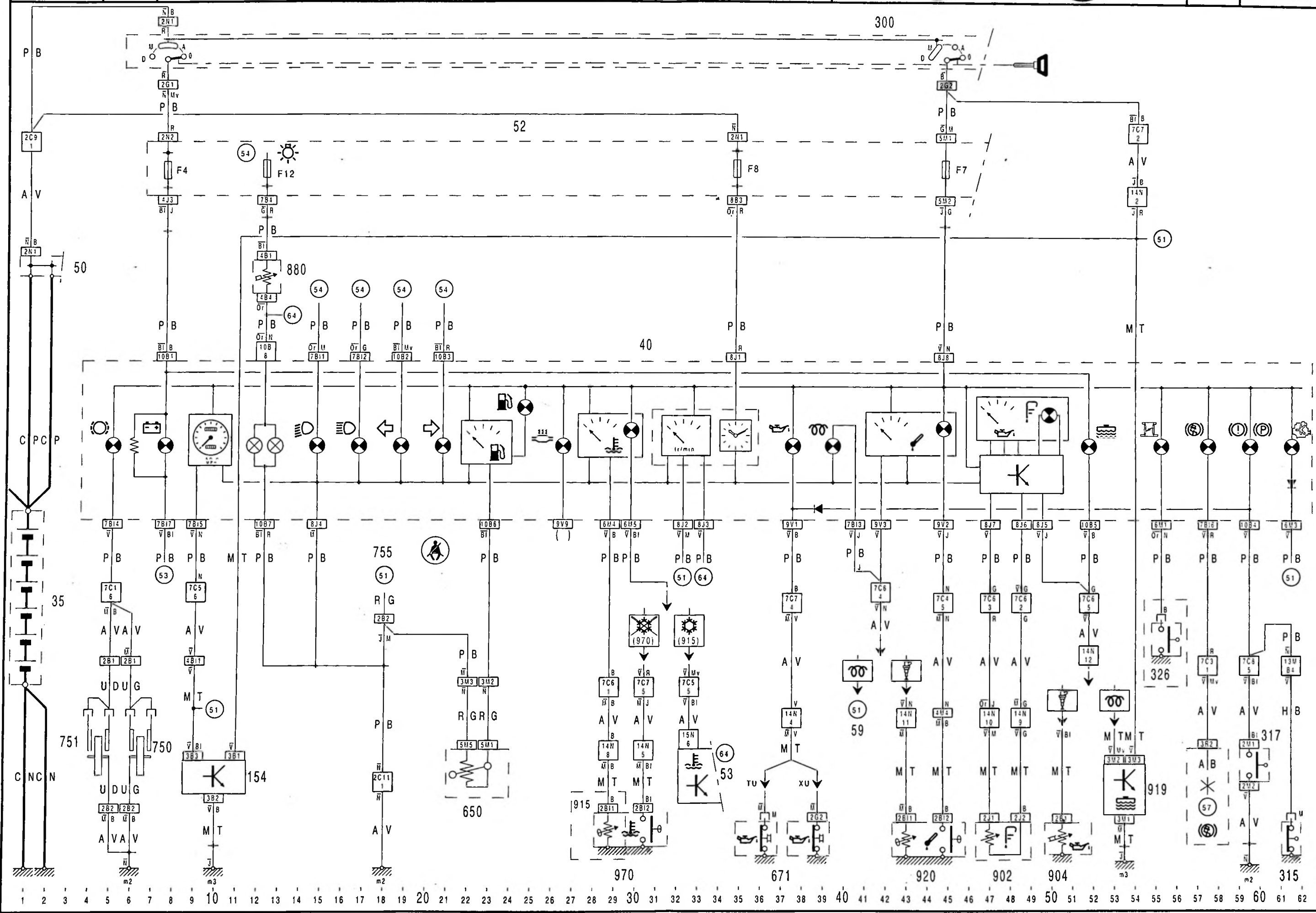
5

6

ZX
520-1/50



52



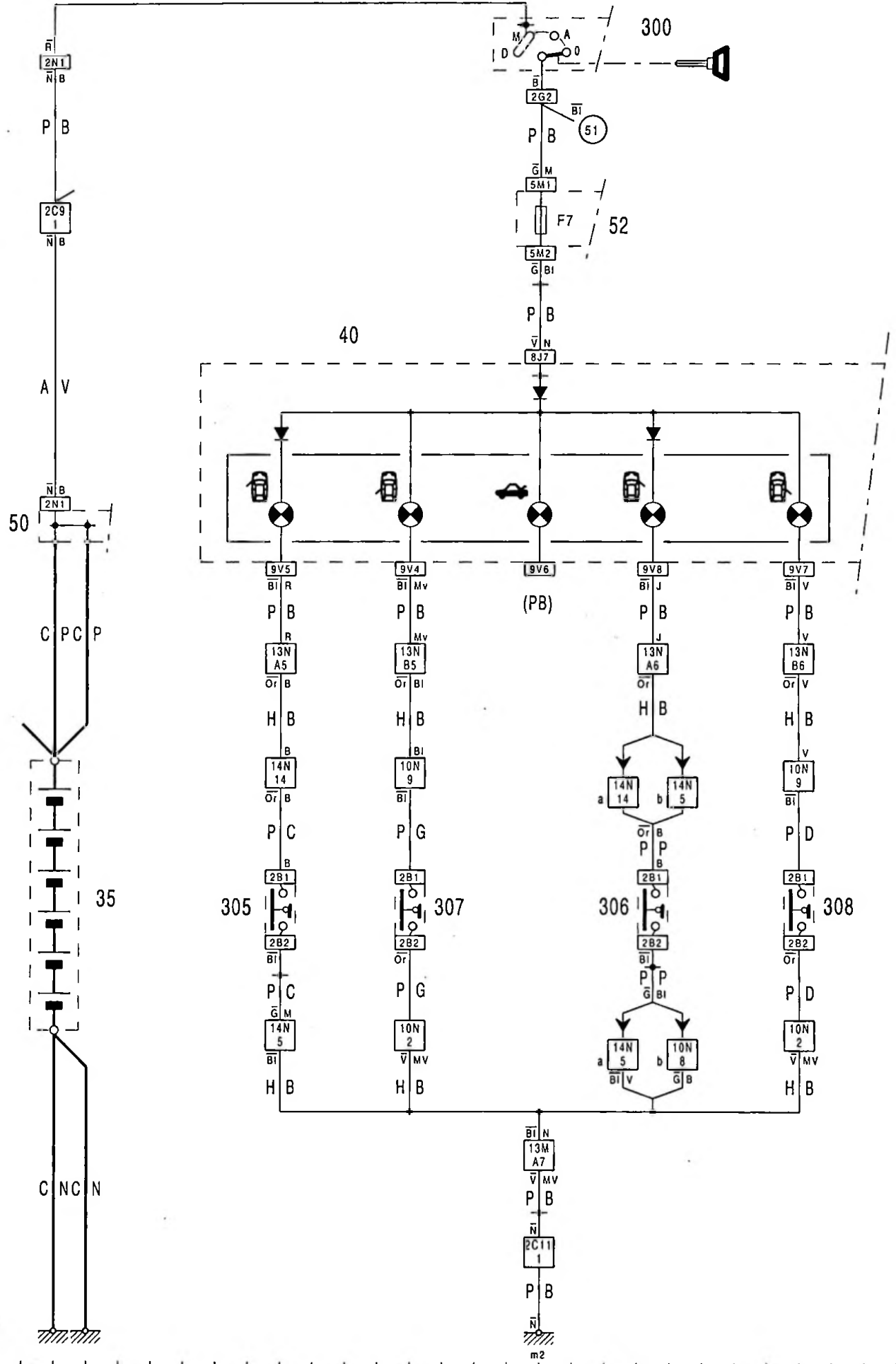


52



ZX
521-0/10a

5



521-0/10a

521-0/10a

1 2 3 4 5 6 7 8 9 10 11 12 13 14 15 16 17 18 19 20 21 22 23 24 25 26 27 28 29

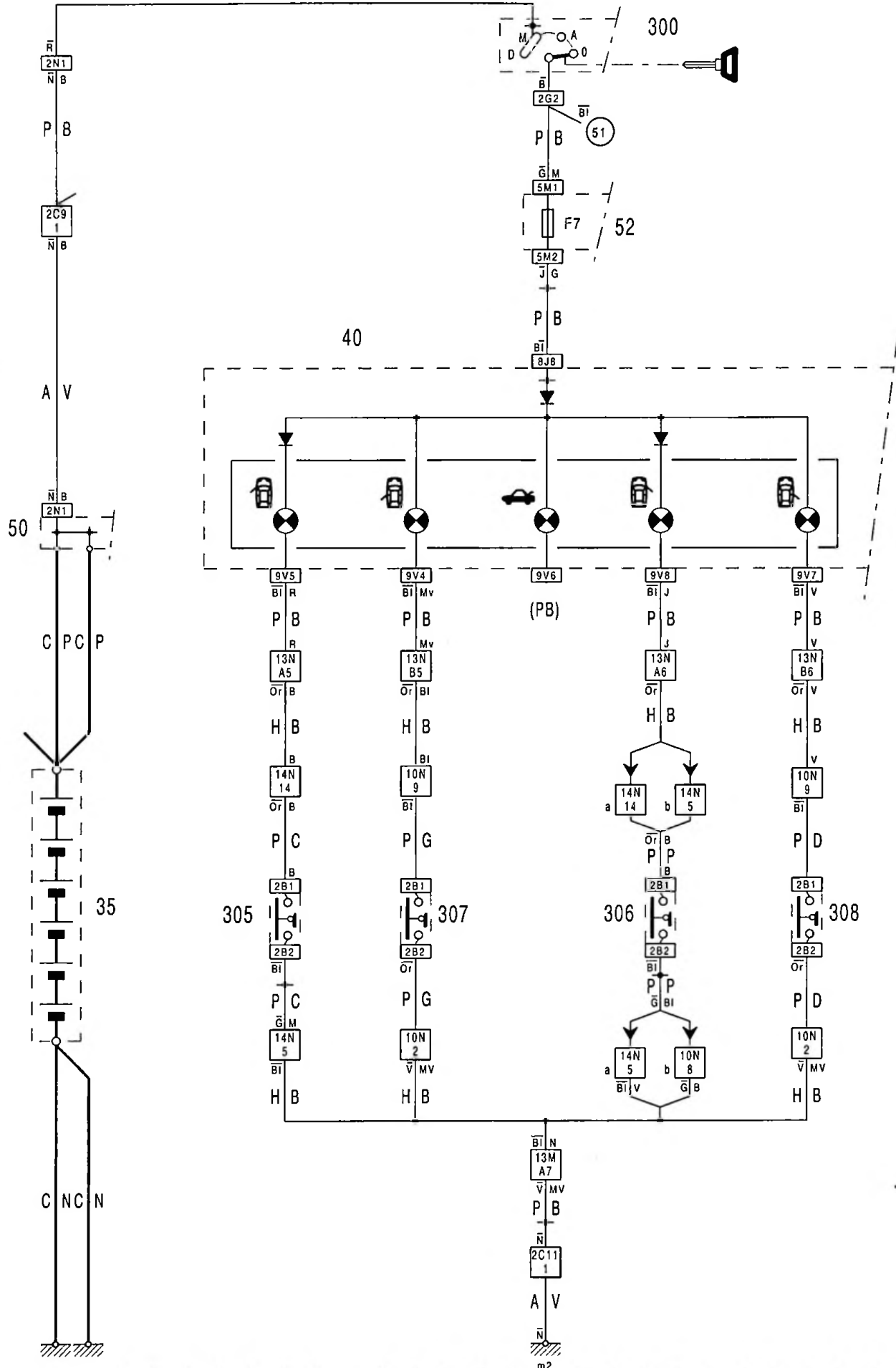


52



ZX
521-0/10b

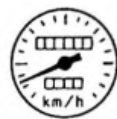
5



1 2 3 4 5 6 7 8 9 10 11 12 13 14 15 16 17 18 19 20 21 22 23 24 25 26 27 28 29



52



ZX
520-000/1

1

FONCTION TABLEAU DE BORD

LISTE DES SCHEMAS



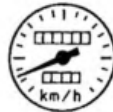


NUMERO	DESIGNATION	VALIDITE
ZX 520-000/1	Liste des schémas figurant au chapitre 52 : TABLEAU DE BORD	
ZX 523-00/10	Tableau de bord : Montre	
ZX 523-00/20	Tableau de bord : Compte-tours	
ZX 523-00/30	Tableau de bord : Vignette portes	
ZX 523-00/40	Tableau de bord : deux thermomètres	

1
2
3
4
5
6
7
8
9
10
11
12
13
14
15
16
17
18
19
20
21
22
23
24
25
26
27
28
29
30
31
32
33

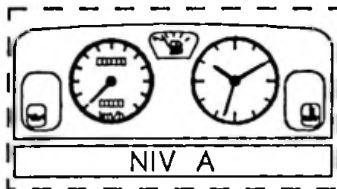
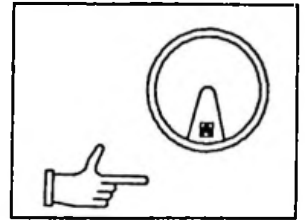
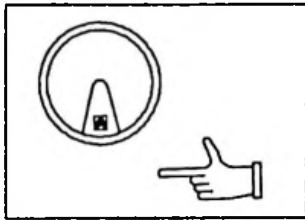


52

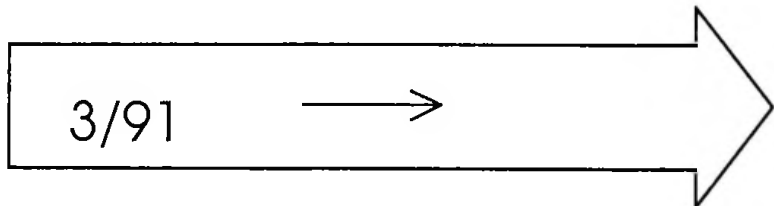


ZX
523-00/10

1

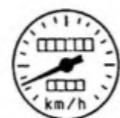


4 X (TU3 2K)			4 X (TU1 K)		
4 X (XU5M 3K)					





52

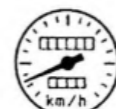


ZX
523-00/10

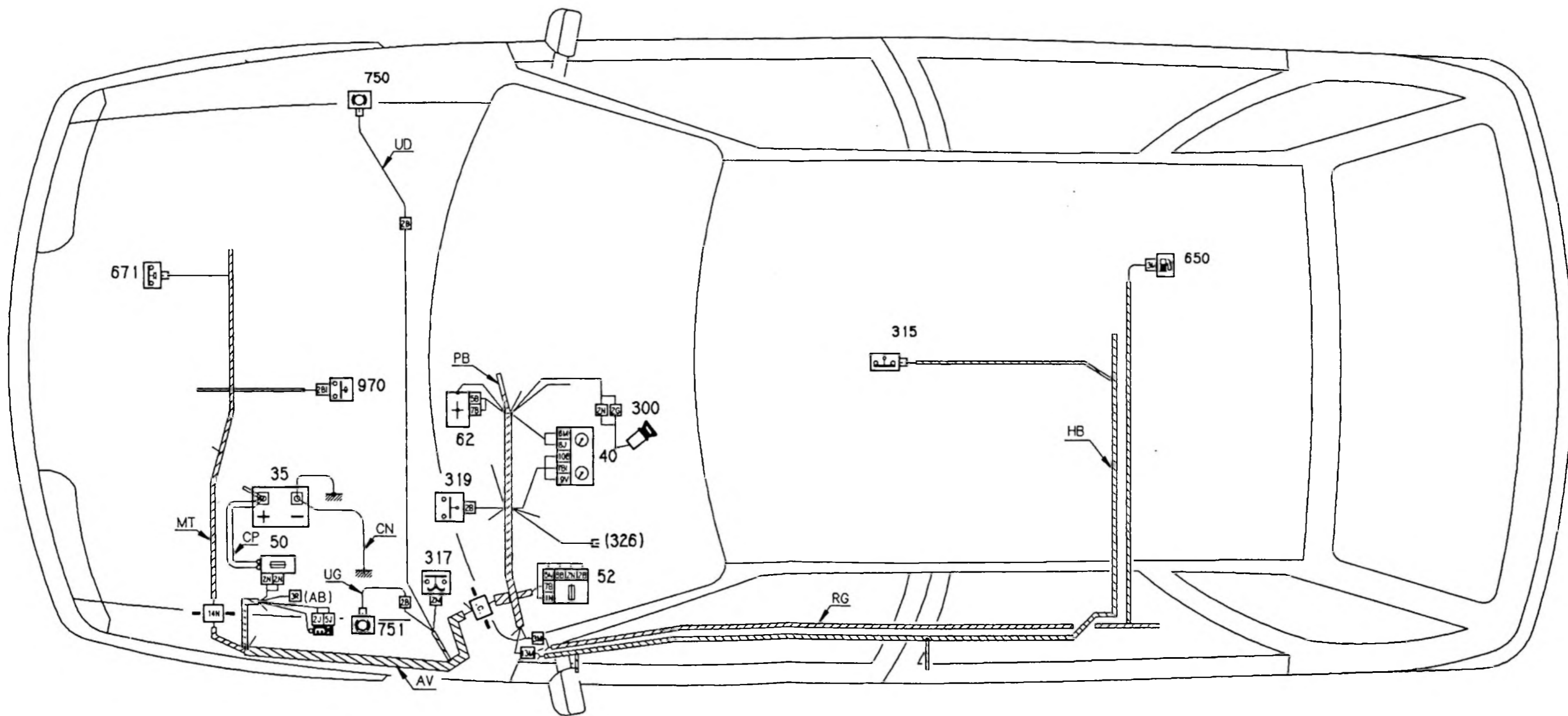
3

4

ZX
523-00/10

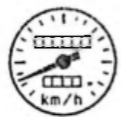


52





52



ZX
523-00/10

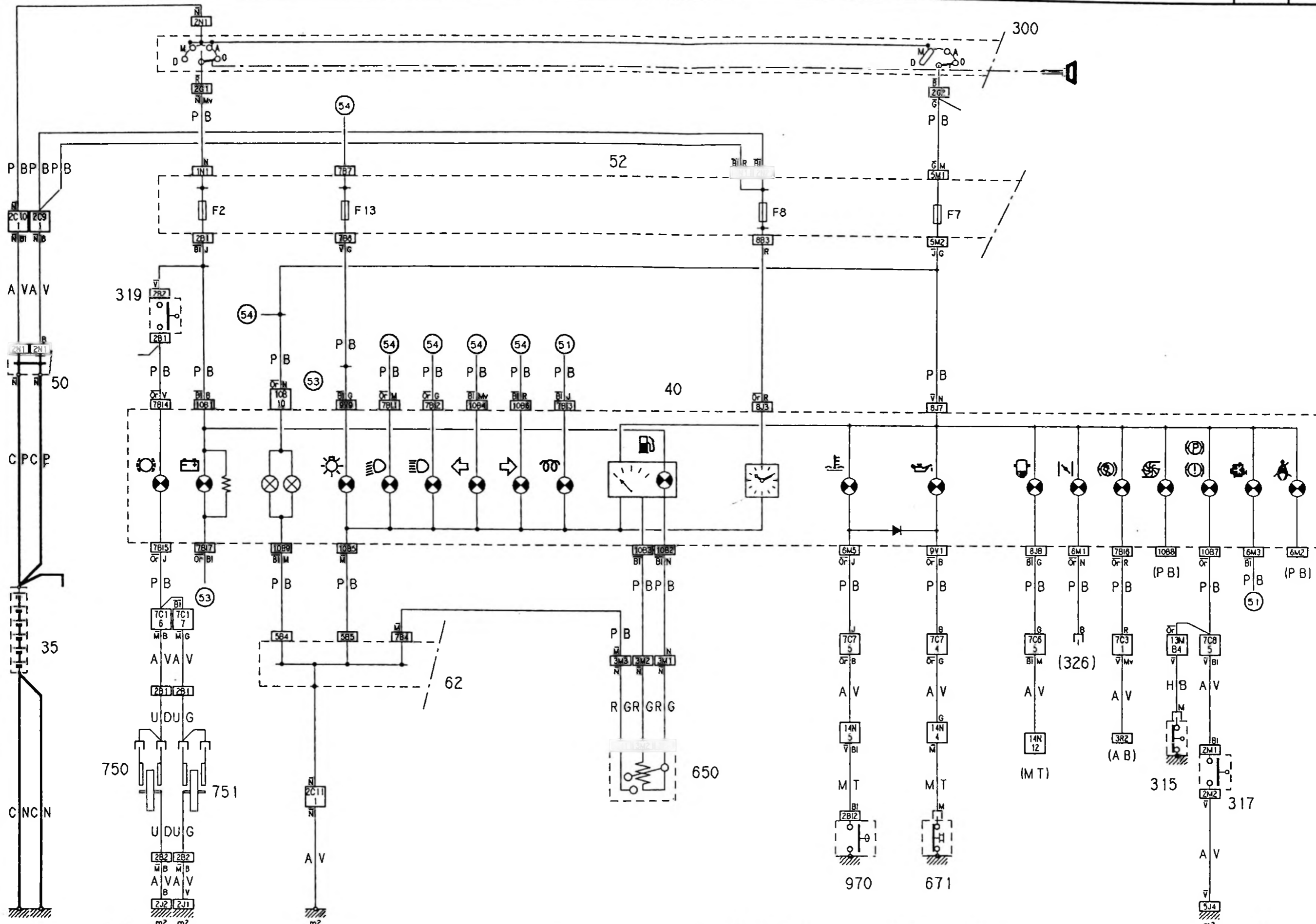
5

6

ZX
523-00/10



52



1 2 3 4 5 6 7 8 9 10 11 12 13 14 15 16 17 18 19 20 21 22 23 24 25 26 27 28 29 30 31 32 33 34 35 36 37 38 39 40 41 42 43 44 45 46 47 48 49 50 51 52 53 54 55 56 57 58 59 60 61 62

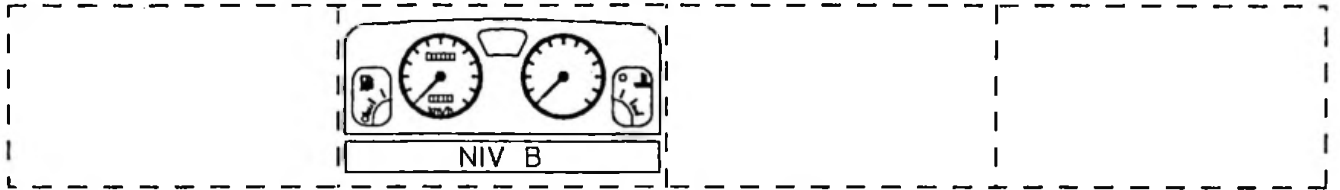
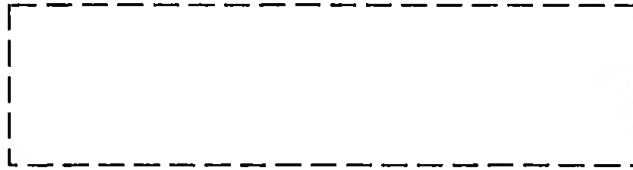
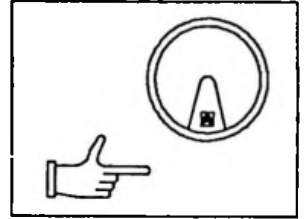
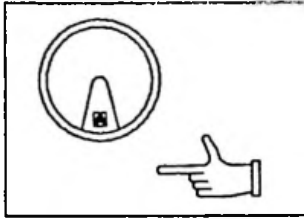


52

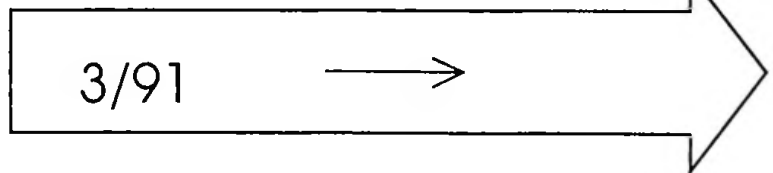


ZX
523-00/20

1

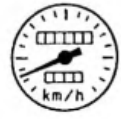


4 X (TU3 2K)			4 X (TU1 K)		
4 X (TU3M Z)					
4 X (XU5M 2K ou 3K)					





52

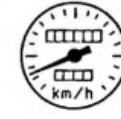


ZX
523-00/20

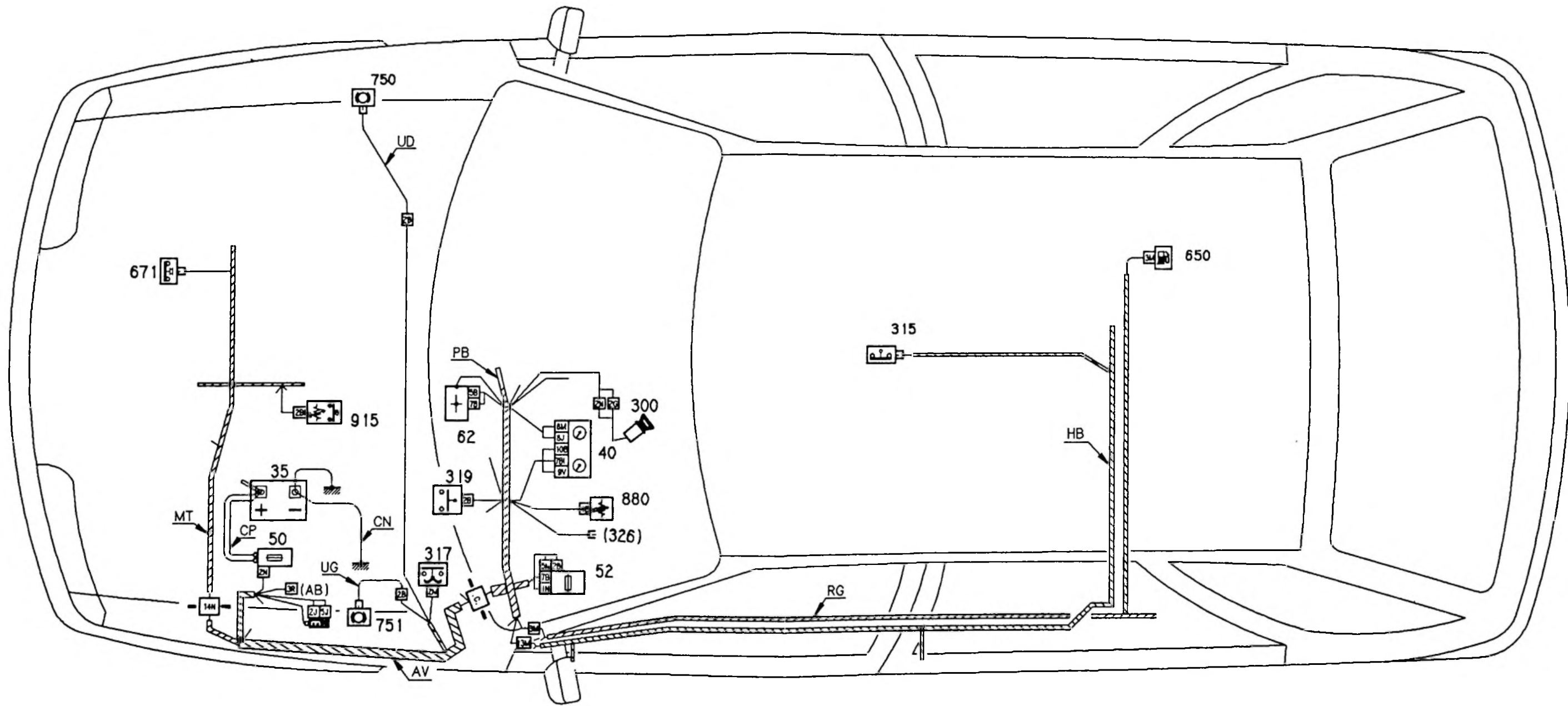
3

4

ZX
523-00/20

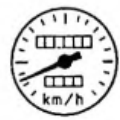


52





52

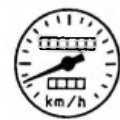


ZX
523-00/20

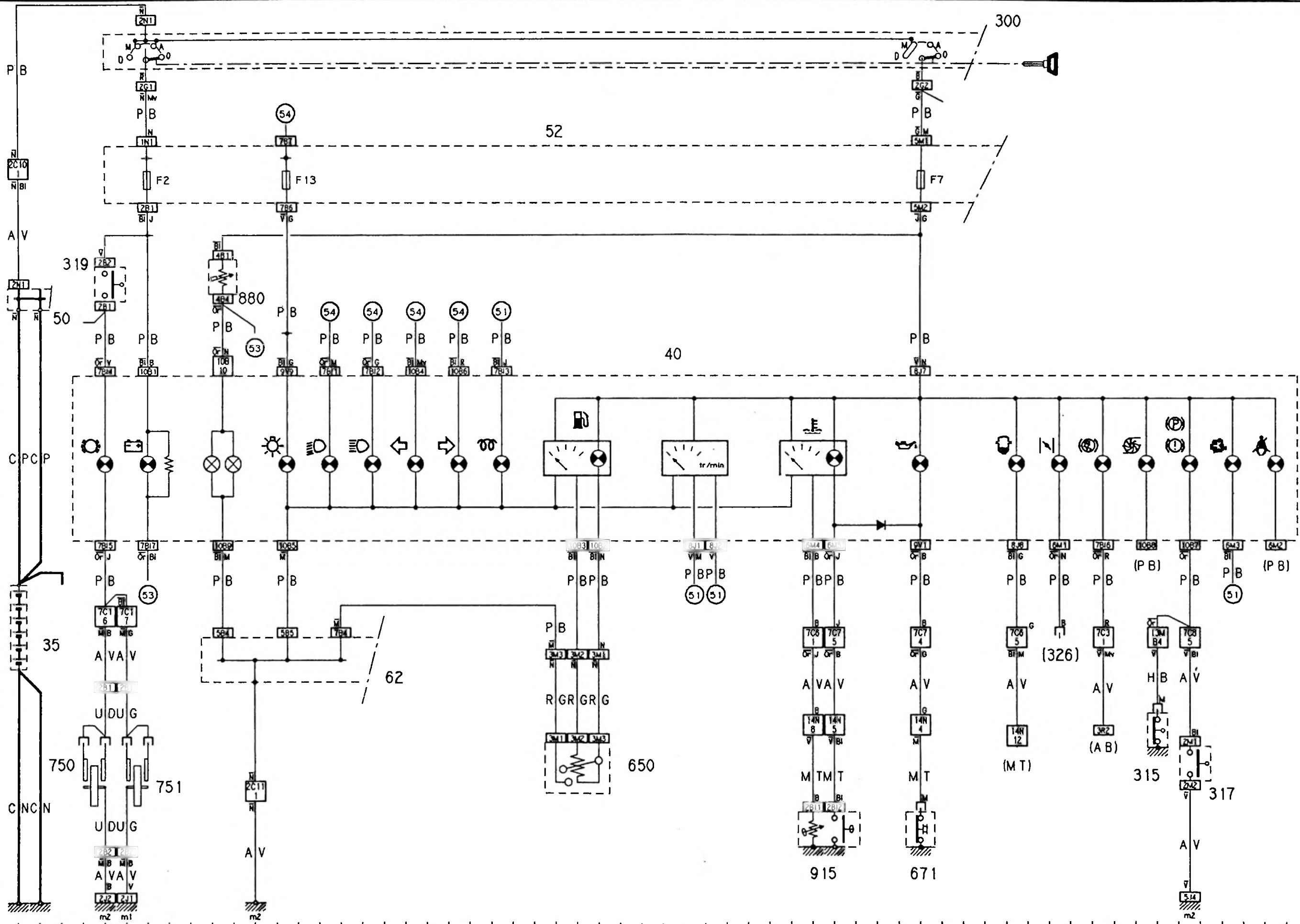
5

6

ZX
523-00/20



52

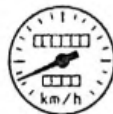


1 2 3 4 5 6 7 8 9 10 11 12 13 14 15 16 17 18 19 20 21 22 23 24 25 26 27 28 29 30 31 32 33 34 35 36 37 38 39 40 41 42 43 44 45 46 47 48 49 50 51 52 53 54 55 56 57 58 59 60 61 62

523-00/20

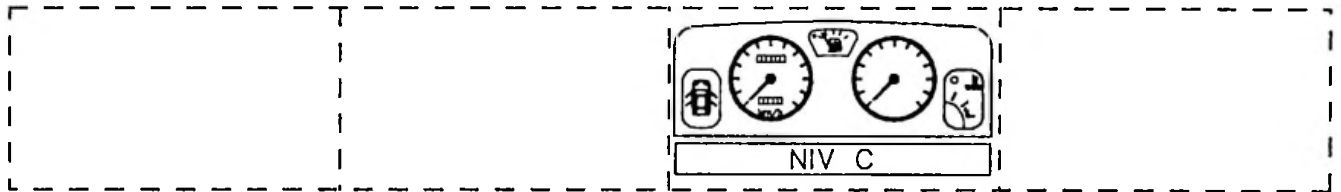
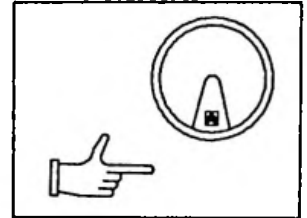
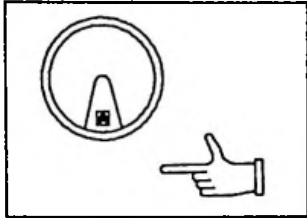






52

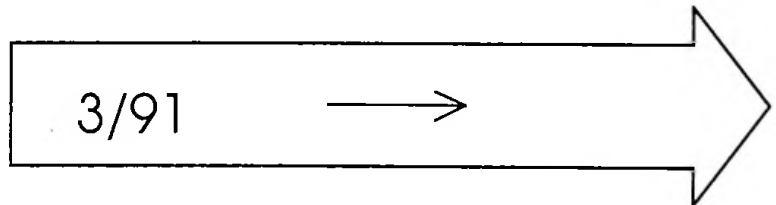


ZX
523-00/30

1

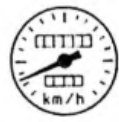


<p>4 X (TU3 2K)</p>   <p>SOLEX</p>	
<p>4 X (XU5M 2K & 3K) (XU5M 3Z)</p>   <p>MAGNETI MARELLI</p>	





52

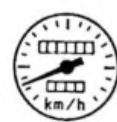


ZX
523-00/30

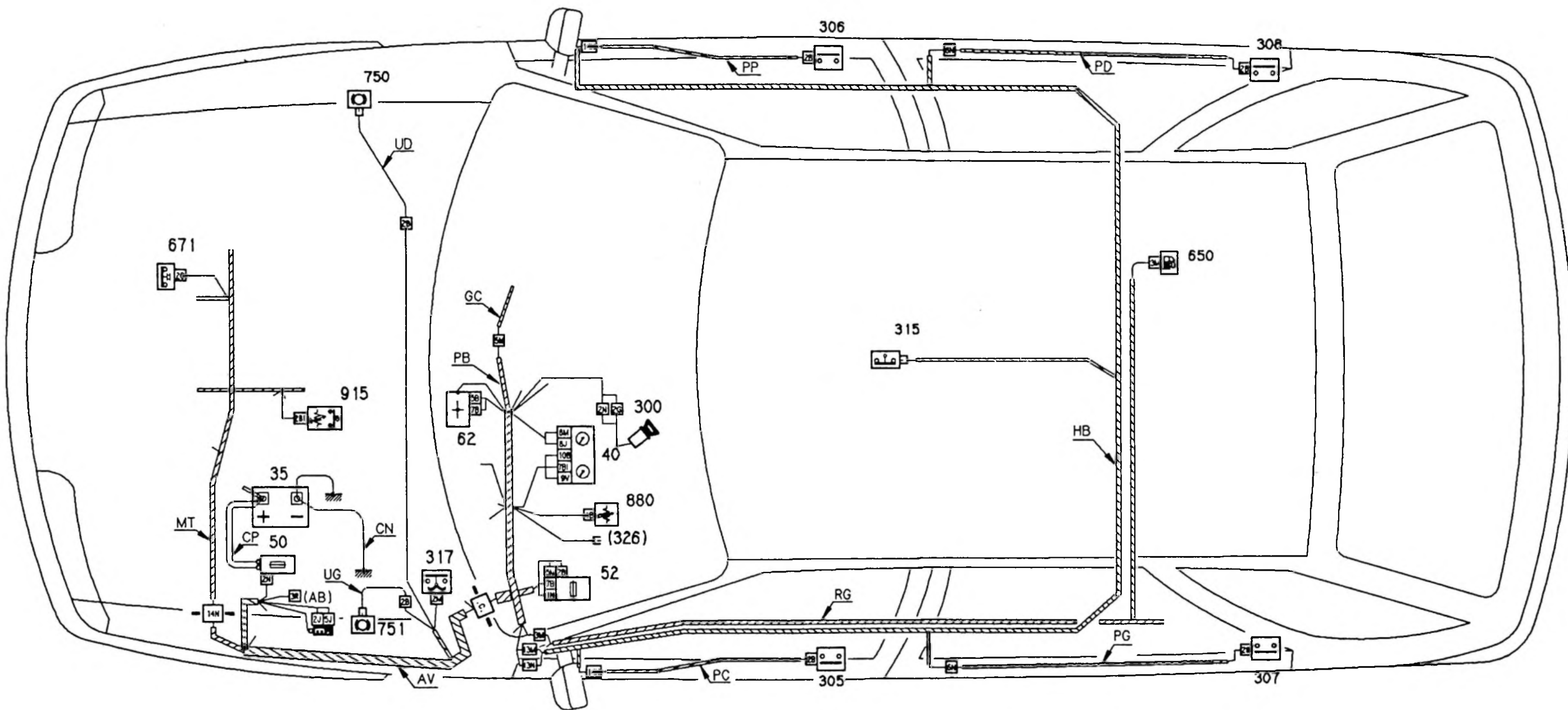
3

4

ZX
523-00/30



52





52

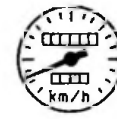


ZX
523-00/30

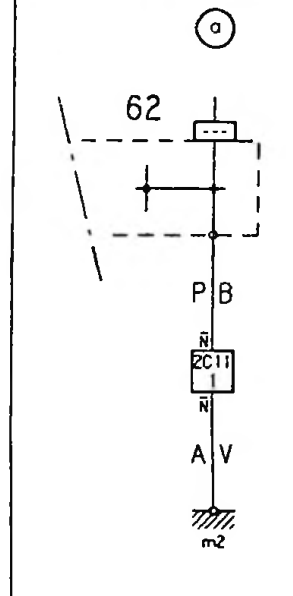
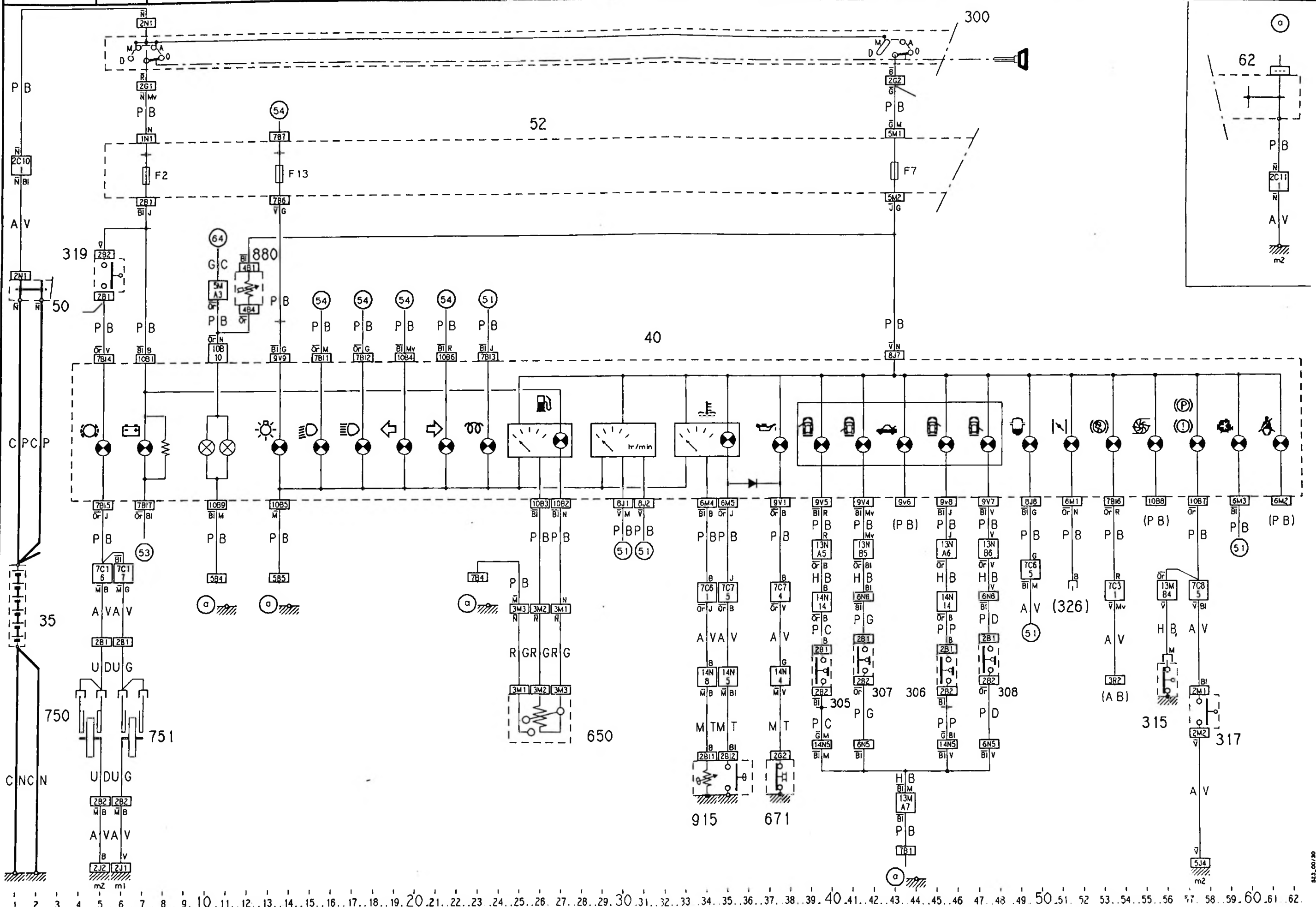
5

6

ZX
523-00/30



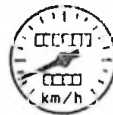
52



1 2 3 4 5 6 7 8 9 10 11 12 13 14 15 16 17 18 19 20 21 22 23 24 25 26 27 28 29 30 31 32 33 34 35 36 37 38 39 40 41 42 43 44 45 46 47 48 49 50 51 52 53 54 55 56 57 58 59 60 61 62

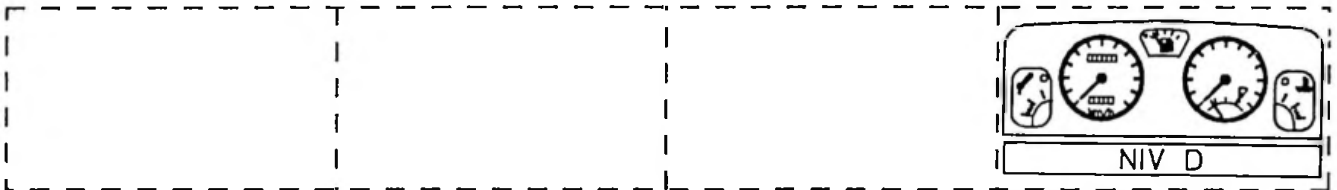
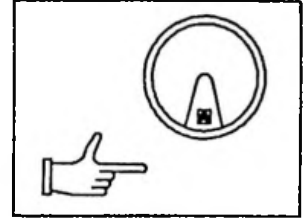
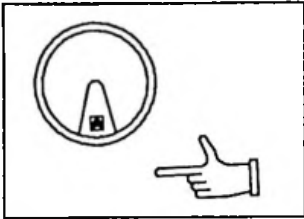








52

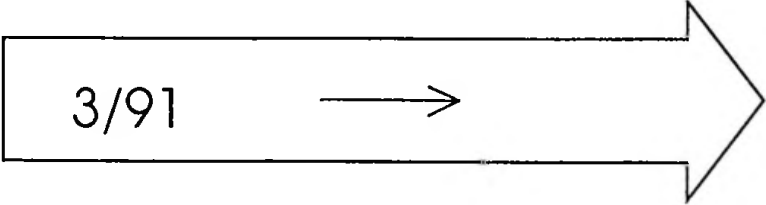


ZX
523-00/40

1

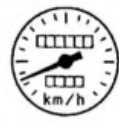


		4 X   (BOSCH) (XU9JA K) & (XU9JA Z)
4 X   (MAGNETI MARELLI) (XU5M 3K) IL		
4 X   (MAGNETI MARELLI) (XU5M 3Z) GR		





52

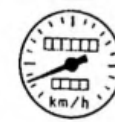


ZX
523-00/40

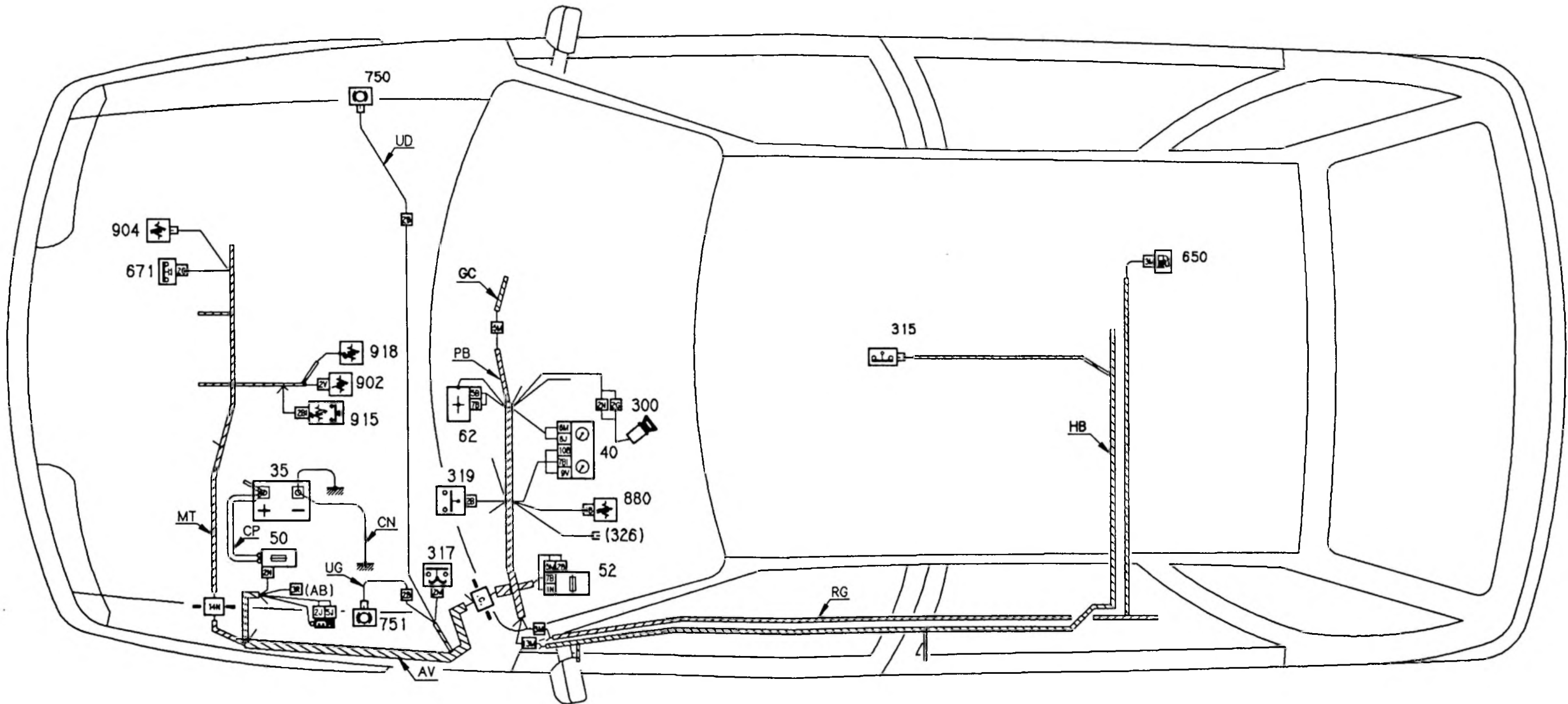
3

4

ZX
523-00/40



52





52

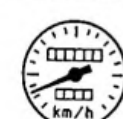


ZX
523-00/40

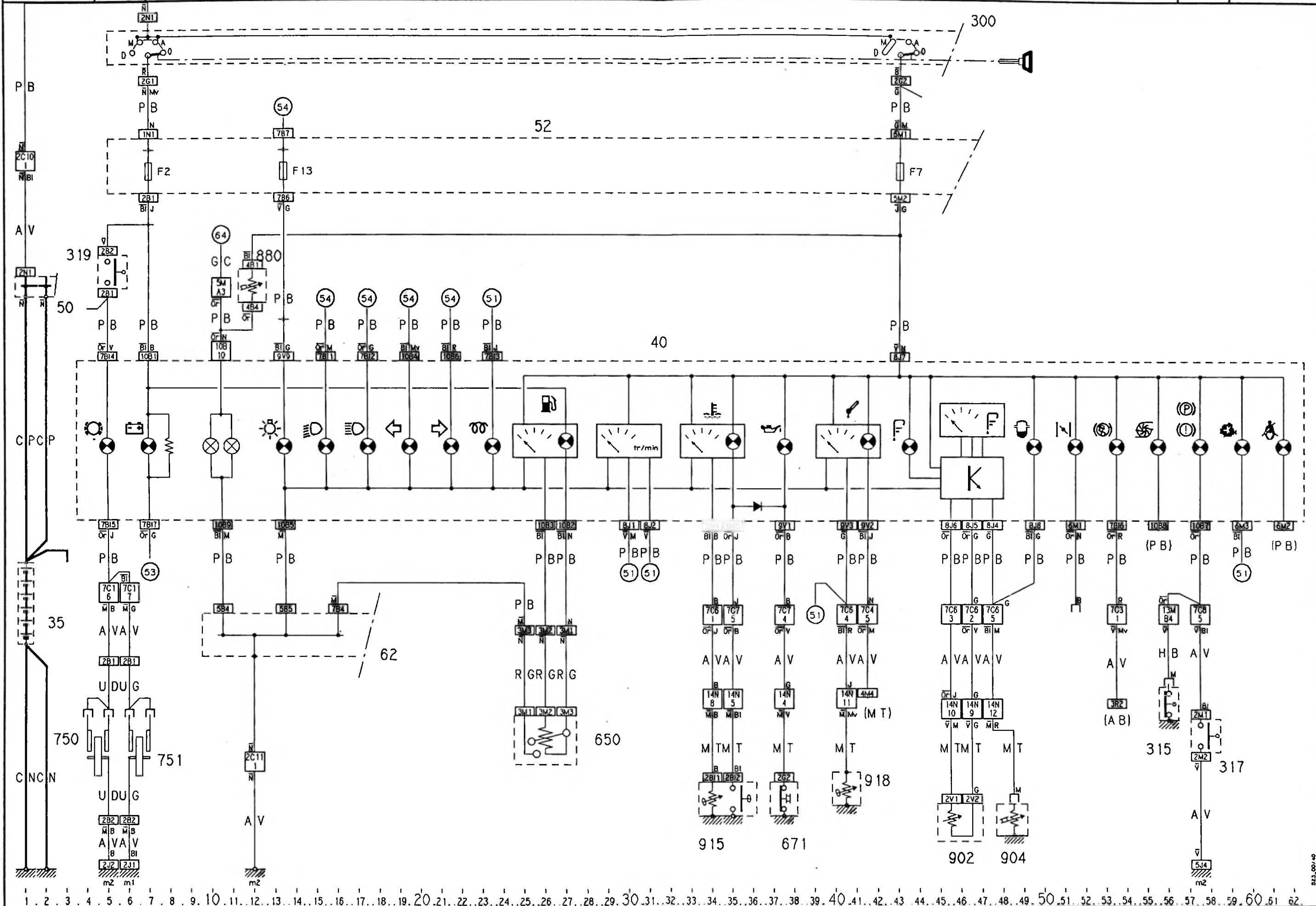
5

6

ZX
523-00/40



52



1 2 3 4 5 6 7 8 9 10 11 12 13 14 15 16 17 18 19 20 21 22 23 24 25 26 27 28 29 30 31 32 33 34 35 36 37 38 39 40 41 42 43 44 45 46 47 48 49 50 51 52 53 54 55 56 57 58 59 60 61 62