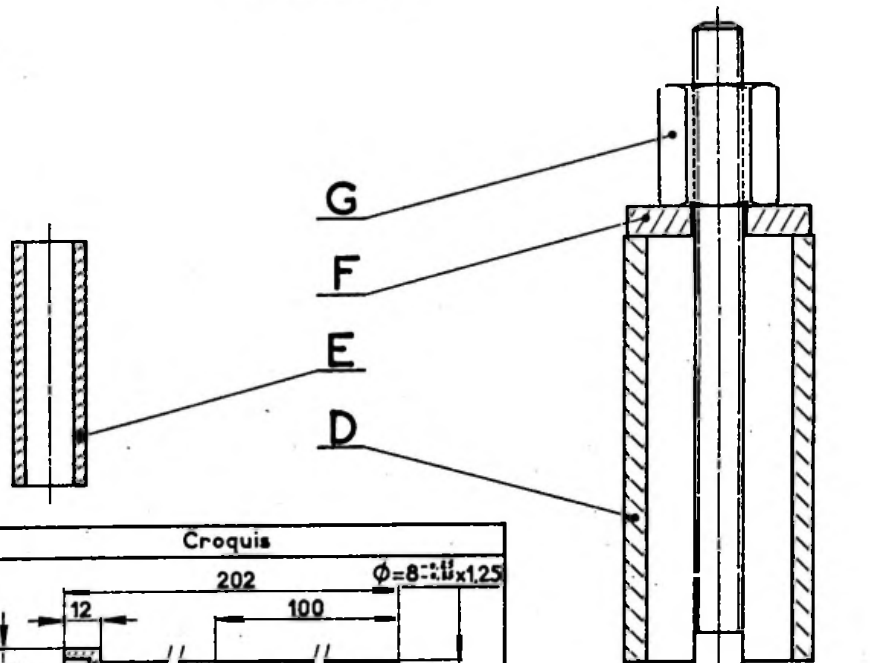


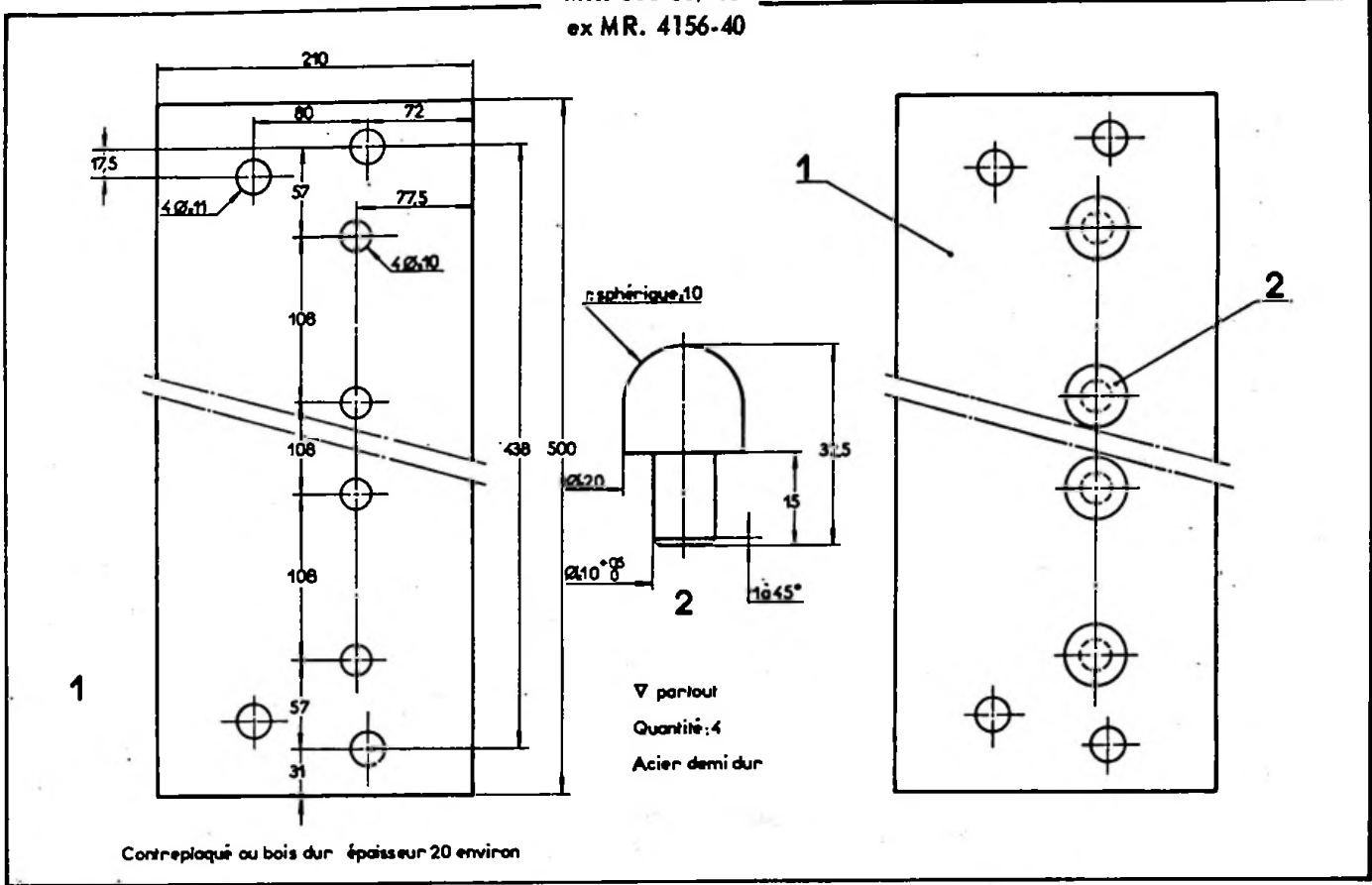
MR. 630_34 / 12



Rep.	Q ^s	Matière	Débit	Croquis
A	1	35 CD4 120 ⁴⁴	$\phi = 18$ L = 202	
B	1	35 CD4 140 ⁴⁴	$\phi = 48$ L = 28,2	
C	1	35 CD4 140 ⁴⁴	$\phi = 41$ L = 35,5	
D	1	C 35	$\phi = 31$ L = 65	
E	1	C 35	$\phi = 12$ L = 40	
F	1	C 35	$\phi = 30$ ép = 5	
G	1	C 35	6 pans 17 s/plats L = 20	

Manuel 850-3

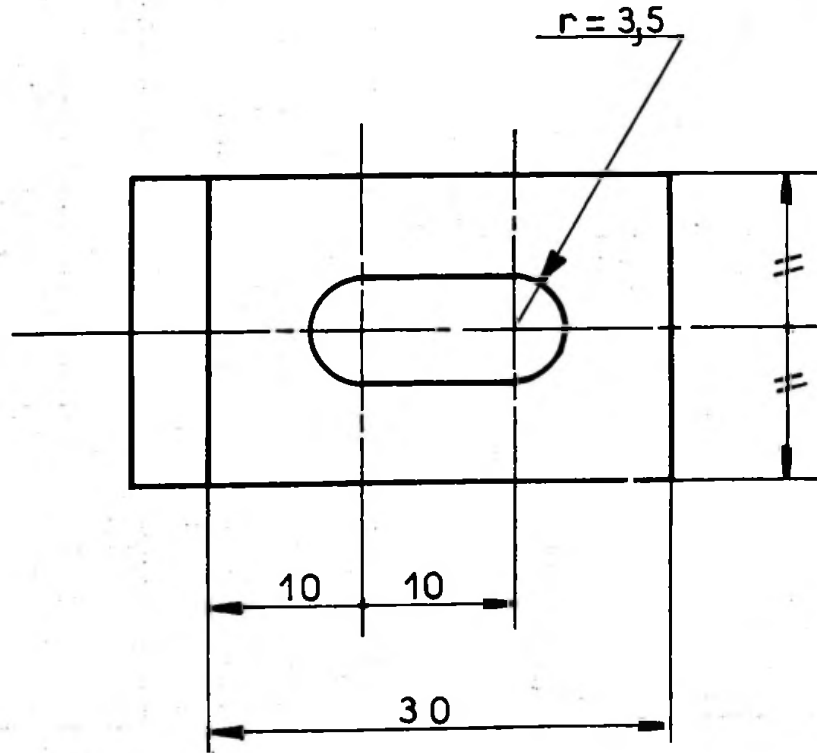
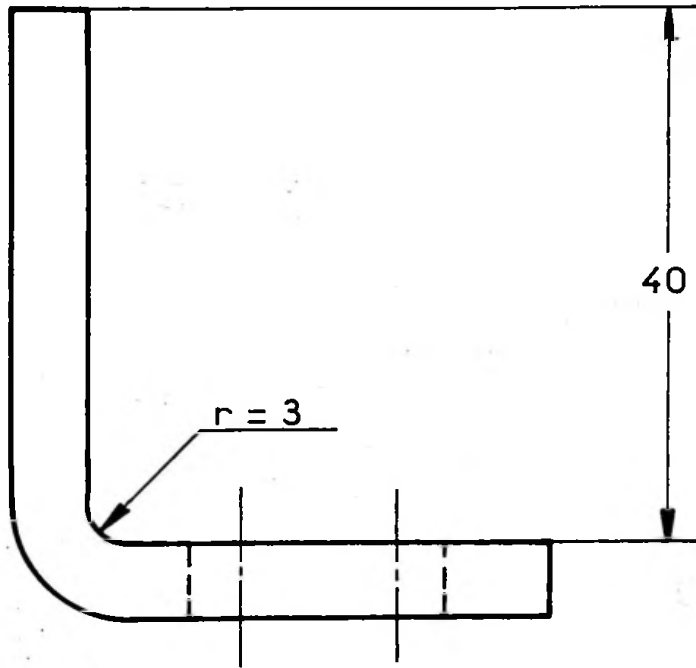
MR. 630-63/13
ex MR. 4156-40



Contreplaqué ou bois dur épaisseur 20 environ

V partout
Quantité: 4
Acier demi dur

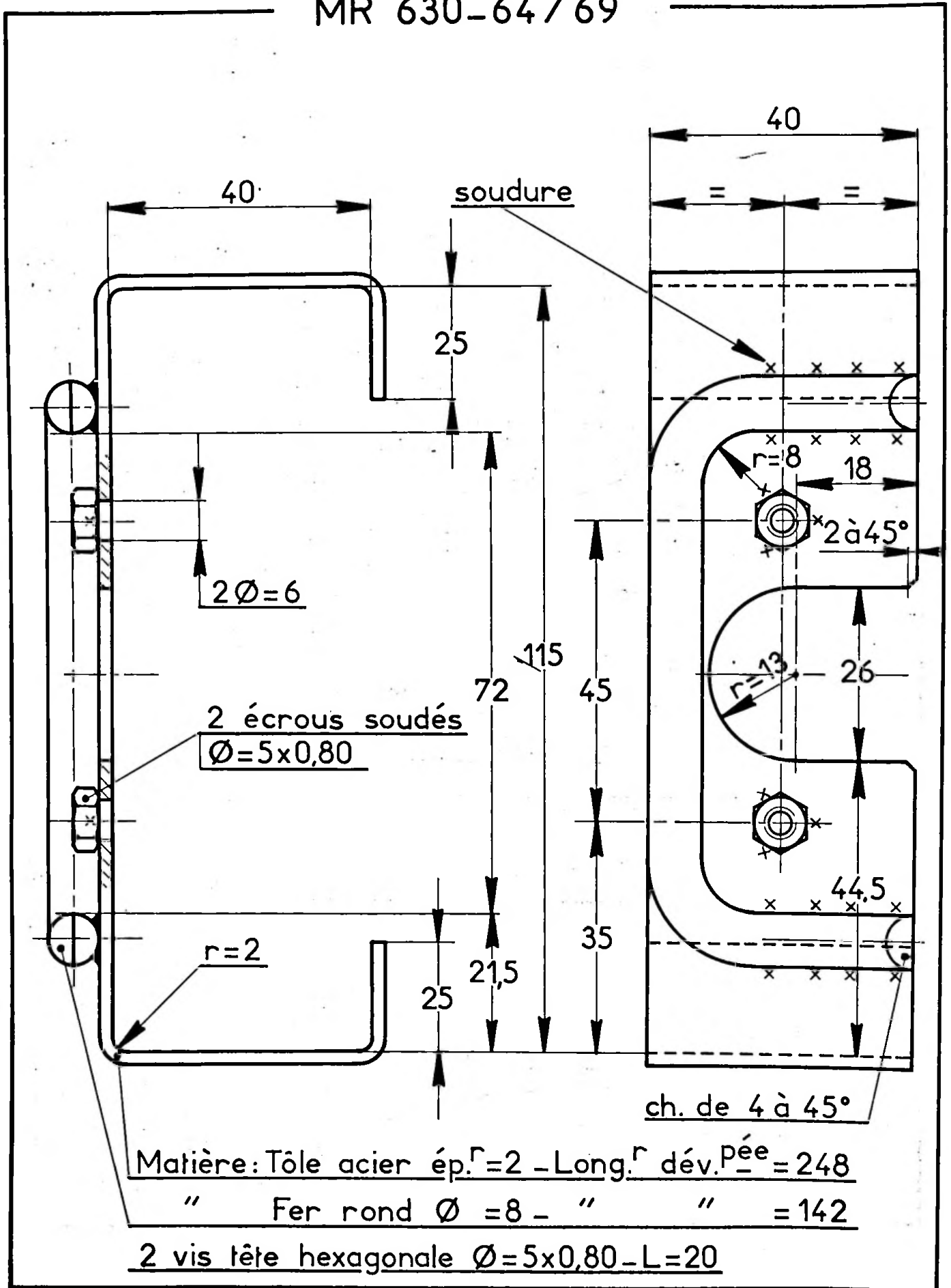
MR. 630-64 / 67



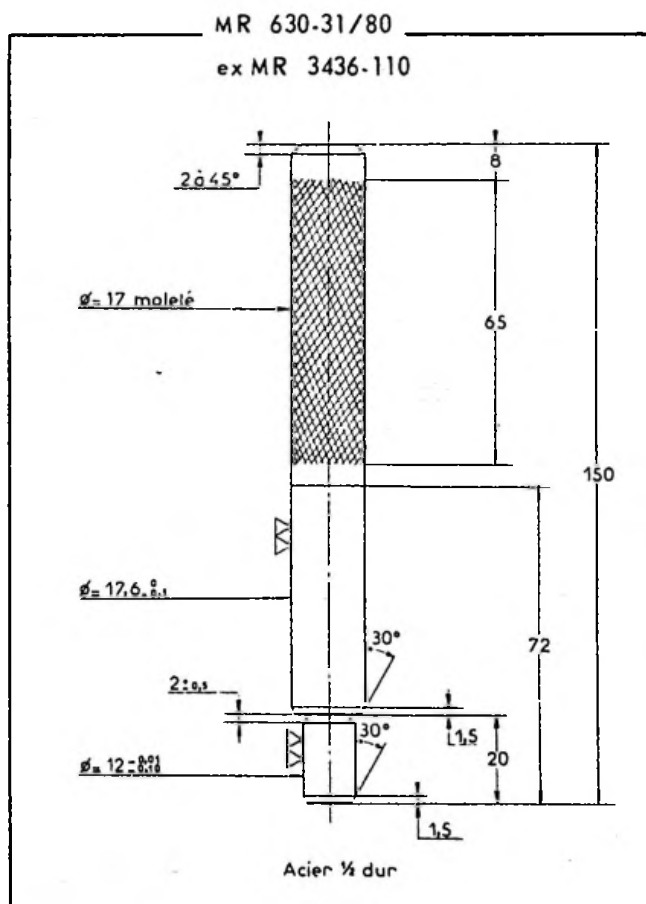
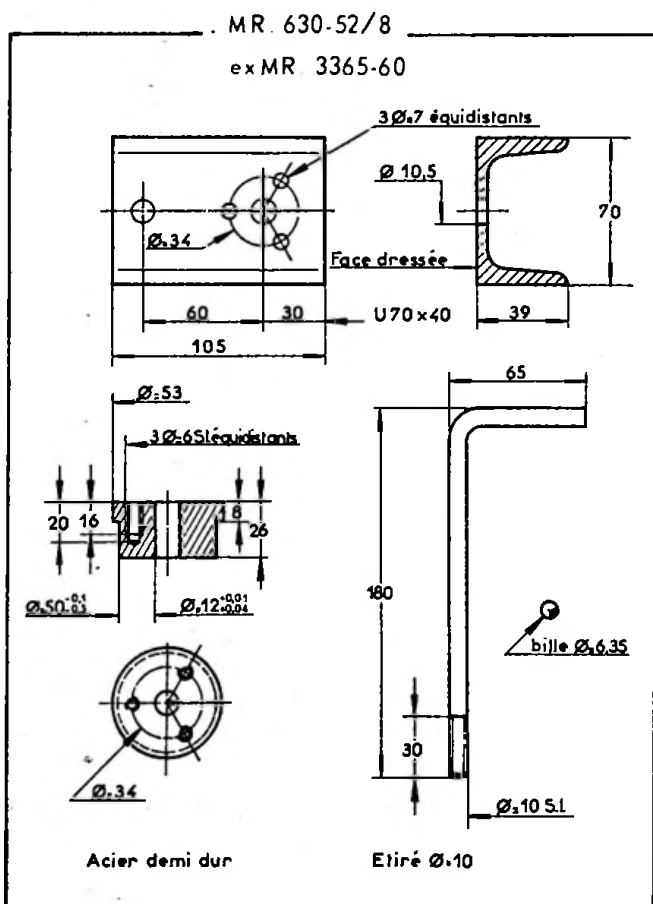
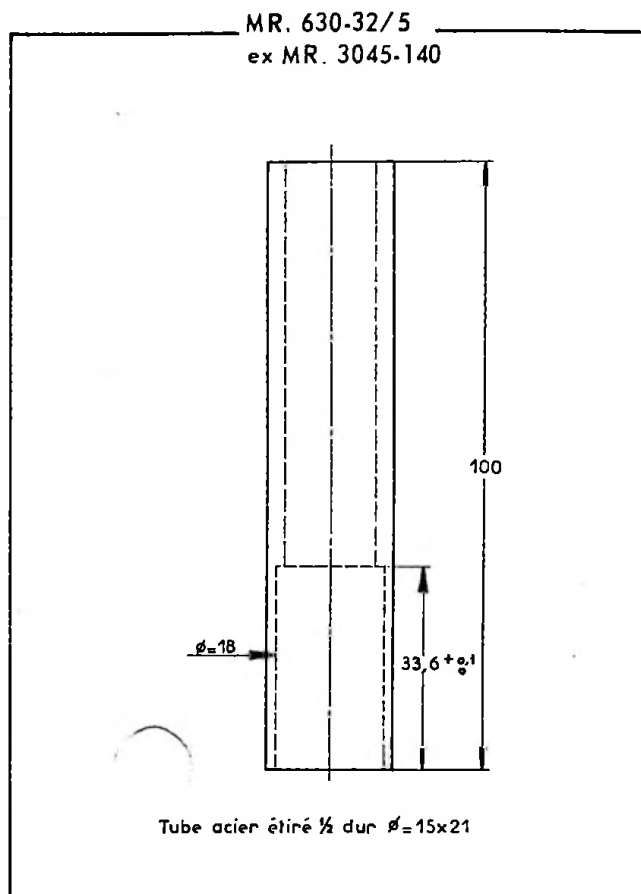
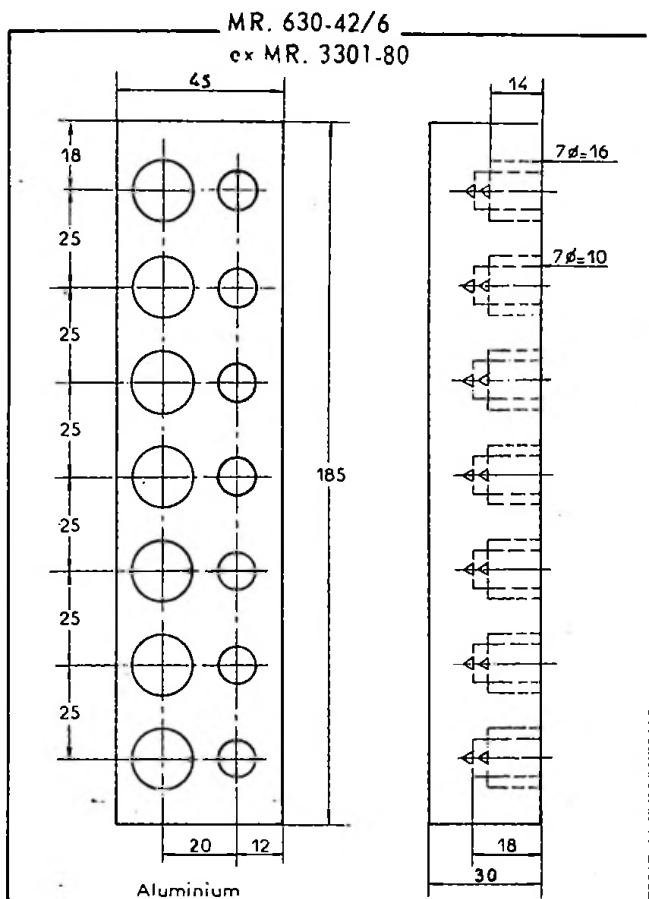
Fer plat 20 x 5
Lg. développée = 75

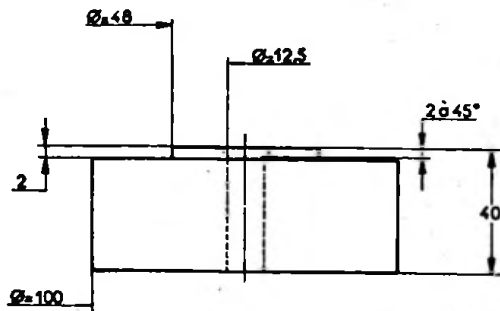
Mise à jour N° 3 au Manuel 850-3 (Correctif)

MR 630-64/69



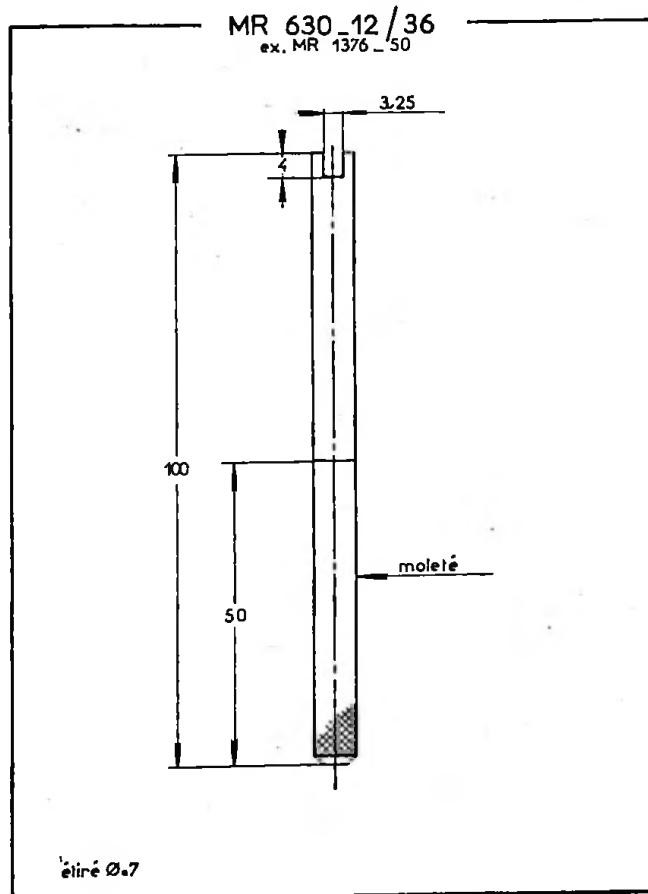
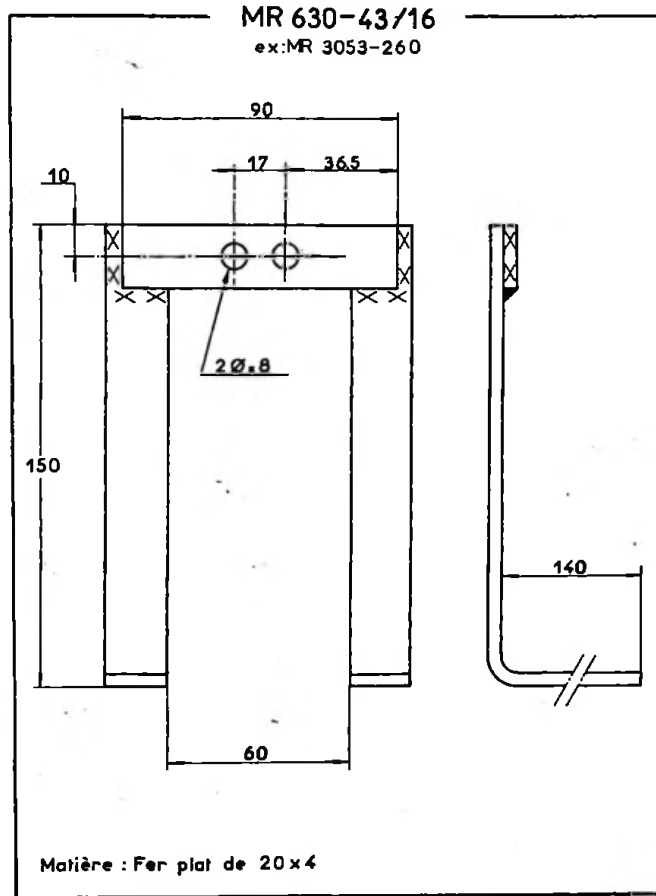
Additif N° 1 au Manuel 850-3



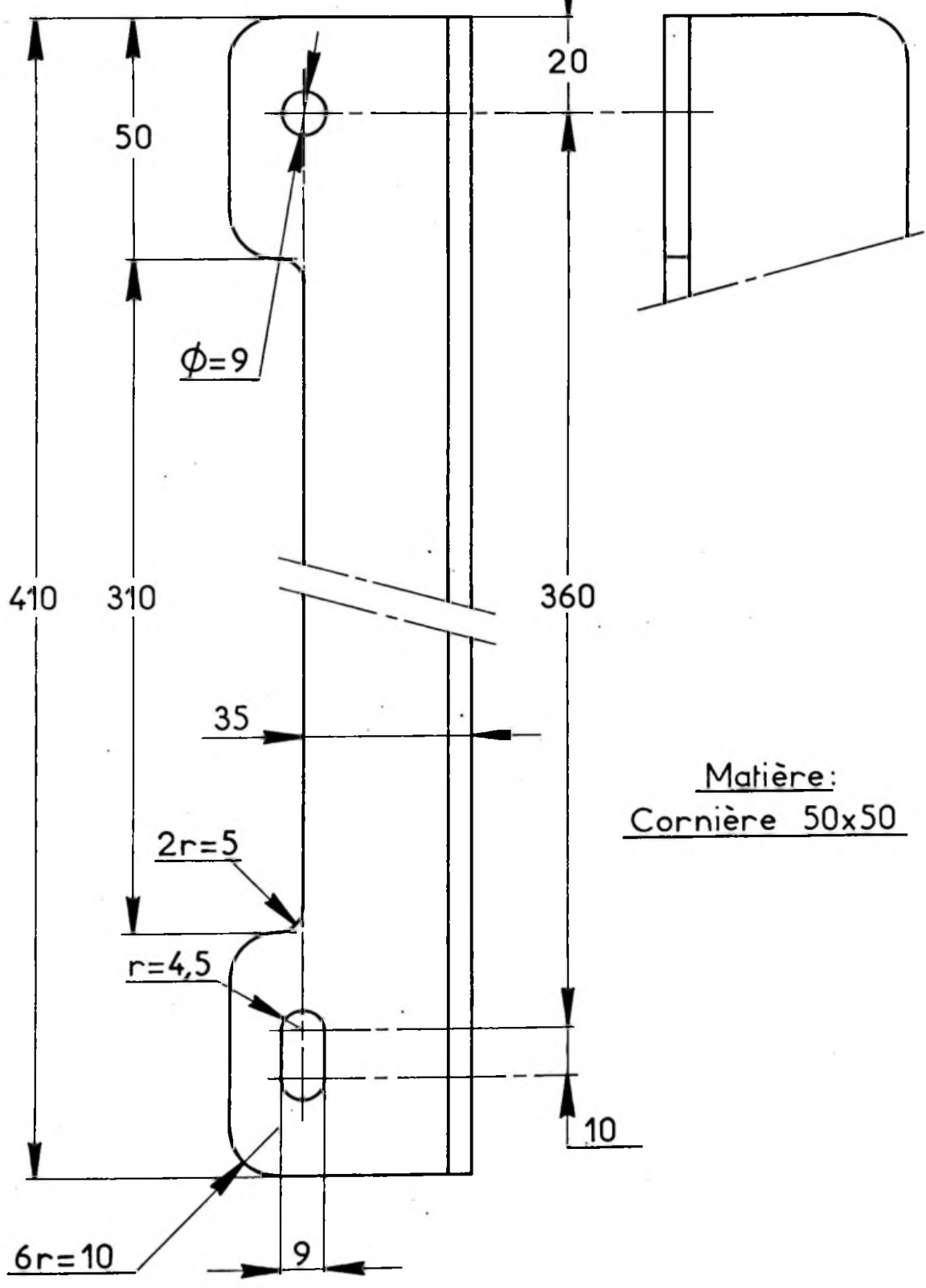
MR. 630-34/18
ex MR. 3676-200

▽ partout

Acier demi-dur



MR 630_31 / 124



Mise à jour N° 2 au Manuel 850-3 (Additif)