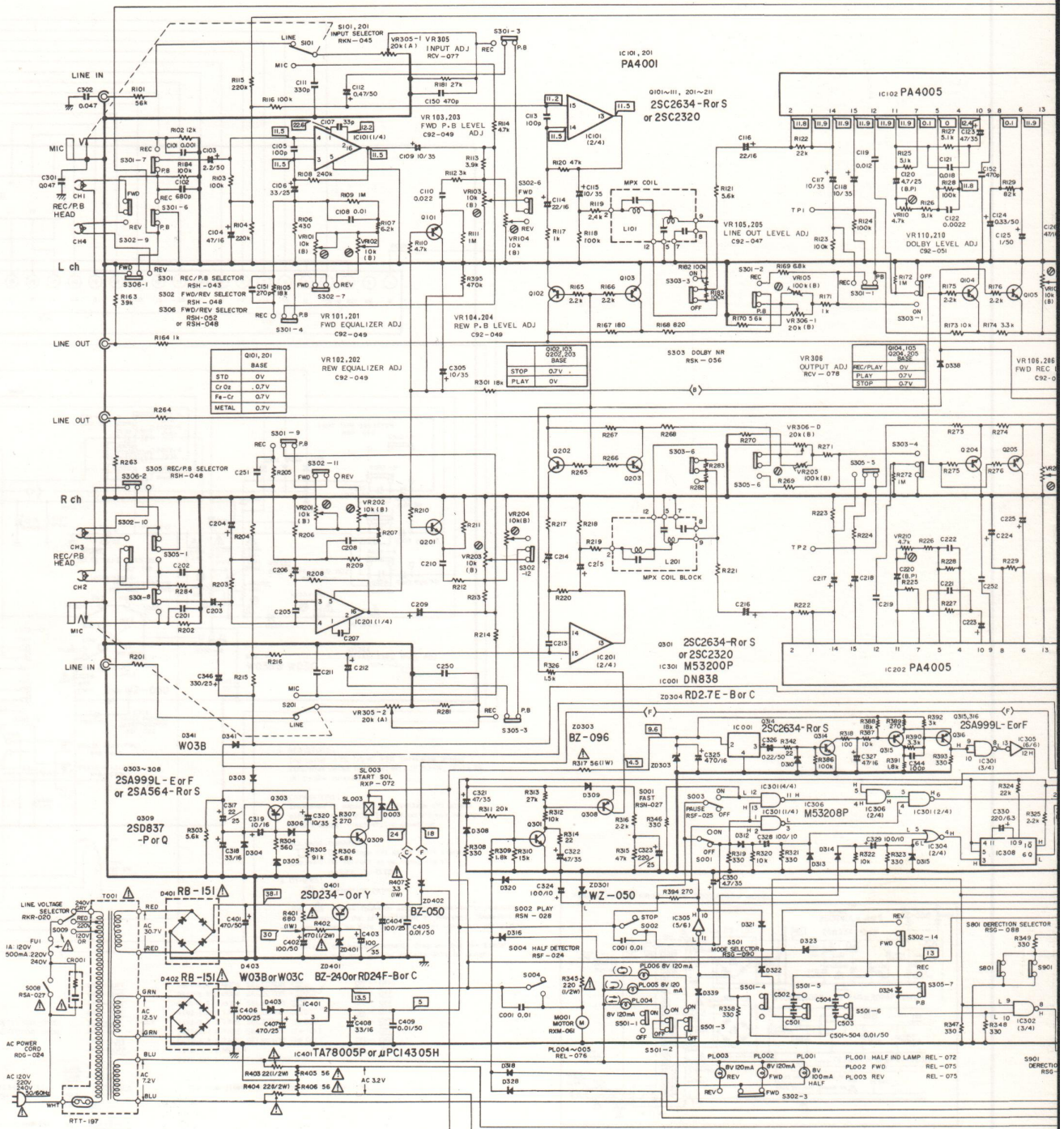
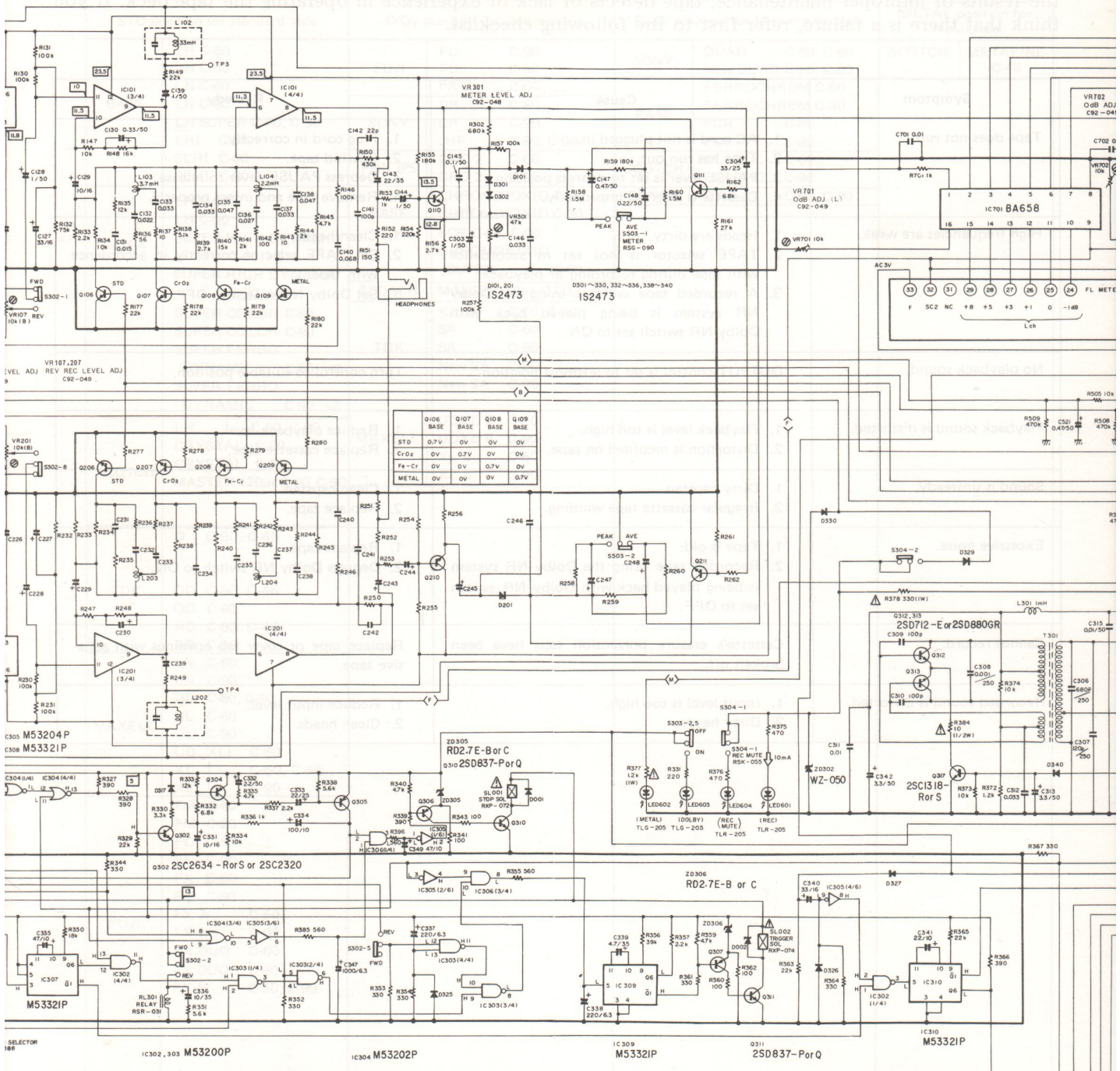


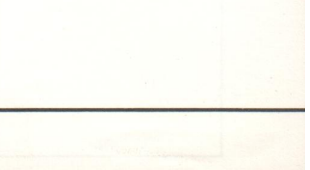
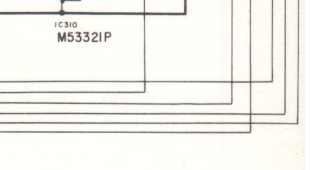
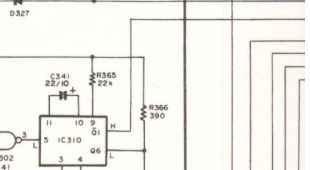
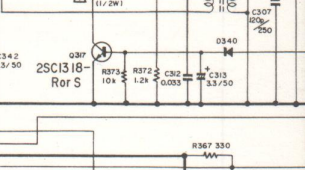
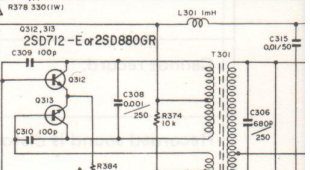
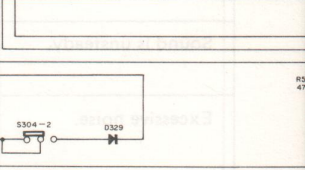
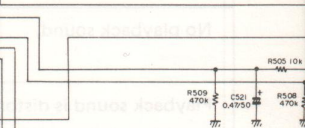
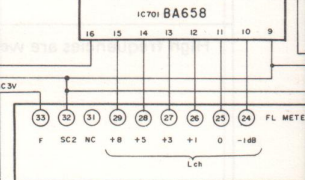
CT-F 750 HB, HE, D, D/G

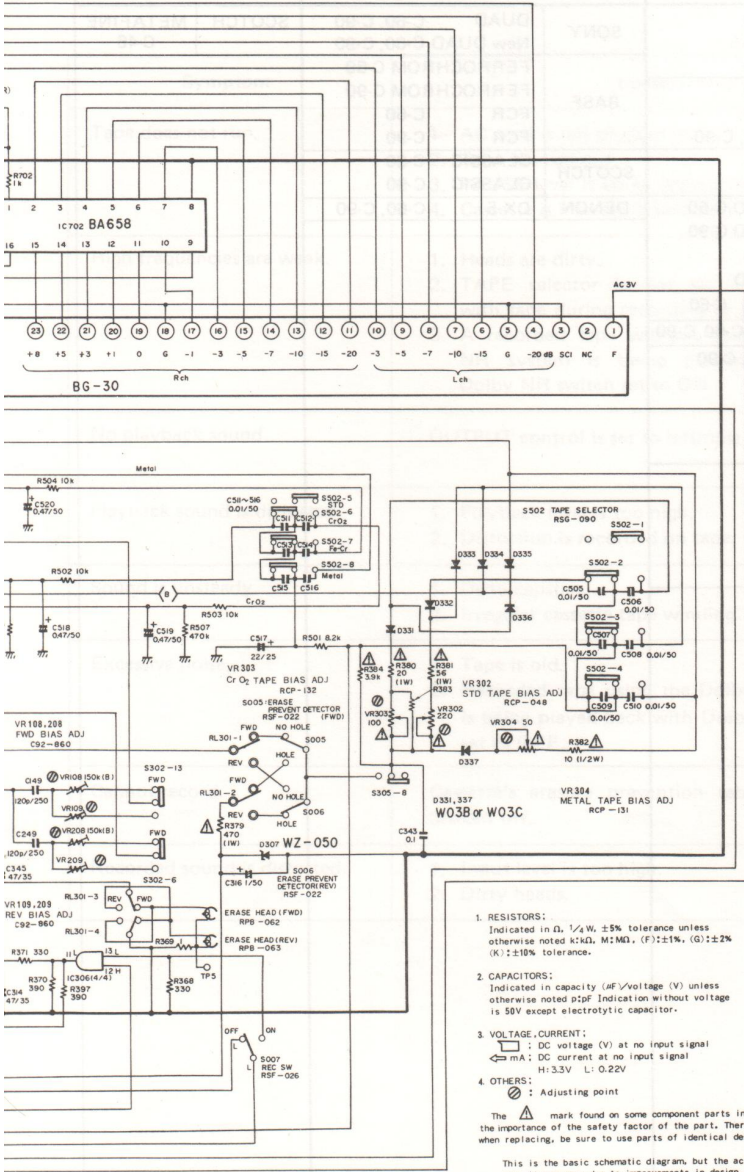
SCHEMATIC DIAGRAM





	Q106	Q107	Q108	Q109
STD	0.7V	0V	0V	0V
Cr-O2	0V	0.7V	0V	0V
Fe-Cr	0V	0V	0.7V	0V
METAL	0V	0V	0V	0.7V



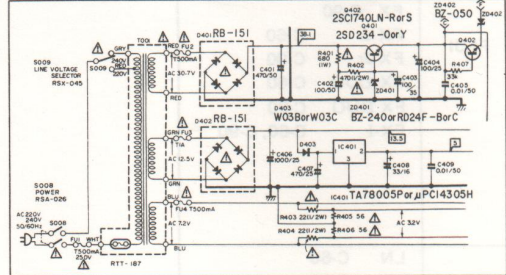


- RESISTORS:**
Indicated in Ω, 1/4 W, ±5% tolerance unless otherwise noted K:KΩ, M:MEI, (F):±1%, (G):±2% (K):±10% tolerance.
 - CAPACITORS:**
Indicated in capacity (at V voltage (V) unless otherwise noted pF Indication without voltage is 50V except electrolytic capacitor.
 - VOLTAGE, CURRENT:**
⊖: DC voltage (V) at no input signal
↔ mA: DC current at no input signal
H:3.3V L:0.22V
 - OTHERS:**
⊗: Adjusting point
- The ⊖ mark found on some component parts indicates the importance of the safety factor of the part. Therefore, when replacing, be sure to use parts of identical designation.
- This is the basic schematic diagram, but the actual circuit may vary due to improvements in design.

- SWITCHED**
- S001 : FAST ON - OFF
 - S002 : PLAY ON - OFF
 - S003 : PAUSE ON - OFF
 - S004 : HALF DETECTOR ON - OFF
 - S005 : ERASE PREVENT DETECTOR (FWD) NO HOLE - HOLE
 - S006 : ERASE PREVENT DETECTOR (REV) NO HOLE - HOLE
 - S007 : REC ON - OFF
 - S008 : POWER ON - OFF
 - S181 : INPUT SELECTOR (L) LINE - MIC
 - S201 : INPUT SELECTOR (R) LINE - MIC
 - S301 : REC/PLAYBACK SELECTOR (L) REC - PLAYBACK
 - S302 : FWD/REV SELECTOR FWD - REV
 - S303 : DOLBY NR ON - OFF
 - S304 : REC MUTE ON - OFF
 - S305 : REC/PLAYBACK SELECTOR (R) REC - PLAYBACK

- S501-1,4 : MODE SELECTOR (⊖) OFF
 - S501-2,5 : MODE SELECTOR (⊕) ON
 - S501-3,6 : MODE SELECTOR (⊖) OFF
 - S501-4,7 : MODE SELECTOR (⊕) ON
 - S502-1,5 : TAPE SELECTOR (STD) ON - OFF
 - S502-2,6 : TAPE SELECTOR (C-CR) ON - OFF
 - S502-3,7 : TAPE SELECTOR (Fe-Cr) ON - OFF
 - S502-4,8 : TAPE SELECTOR (METAL) ON - OFF
 - S503 : METER AVERAGE - PEAK
 - S501,801 : DIRECTION SELECTOR
- The underlined indicates the switch position.

POWER SUPPLY CIRCUIT FOR 220V/240V MODEL



**Table of Leading Brands
of Tapes**

**Tableau des Principales
marques de bande**

**Tabelle der Führende
Bandmarken**

This table shows the proper settings for the tape selector for all leading brands of tapes.

Ce tableau mentionne les réglages appropriés du sélecteur de bande pour les bandes de marque les plus courantes.

Diese Tabelle zeigt die richtige Einstellung des Bandsortenwählers für die wichtigsten Tonbandmarken.

STD position for standard tape		CrO ₂ position for chrome tape		Fe-Cr position for ferrichrome tape		METAL position for metal tape	
BASF	LH C-60 LH C-90 LN C-60 LN C-90 LH SUPER C-60, C-90 LHI C-60 SLHI C-60 SLHI C-90	FUJI	FC C-60 FC C-90 FX-II C-60	SONY	DUAD C-60, C-90 New DUAD C-60, C-90	SCOTCH	METAFINE C-46
		SONY	CR C-60 CR C-90 JHF C-60, C-90	BASF	FERROCHROM C-60 FERROCHROM C-90 FCR C-60 FCR C-90		
		PHILIPS	CRO 2 C-60 CRO 2 C-90	SCOTCH	CLASSIC C-60 CLASSIC C-90		
AGFA	LH C-60 LH C-90 SUPER HIGH DYNAMIC C-60 +6 SUPER HIGH DYNAMIC C-90 +6 SUPER COLOR C-60 SUPER COLOR C-90 SUPER FERRO DYNAMIC C-60 +6 SUPER FERRO DYNAMIC C-90 +6	BASF	CHROMDIOXID C-60 CHROMDIOXID C-90 SCR C-60, C-90 CHROMDIOXID SUPER C-60	DENON	DX-5 C-60, C-90		
		SCOTCH	MASTER 70µs C-60, C-90				
		TDK	KR C-60, C-90 SA C-60 SA C-90 New SA C-60 New SA C-90				
SCOTCH	LH C-60, C-90 CRYSTAL C-60 CRYSTAL C-90 MASTER 120µs C-60, C-90	MAXELL	UDXL II C-60 UDXL II C-90 XL II C-60 XL II C-90				
TDK	D C-90, C-46 OD C-60, C-46 OD C-90 AD C-60, C-46 AD C-90						
MAXELL	LN C-60 LN C-90 UD C-60, C-90 UL C-60 UL C-90 UD XLI C-60 XL I C-60, C-46 XL I C-90						
FUJI	FM C-60 FM C-90 FL C-60 FL C-90 FX C-60 FX C-90 FX Jr C-60 FX Jr C-90 FX DUO C-60 FX DUO C-90 FX-I C-60, C-90						
SONY	LN C-60 LN C-90 HF C-60, C-90 AHF C-60 AHF C-90 BHF C-60, C-90						
DENON	DX-3 C-60 DX-3 C-90						
AMPEX	STUDIO QUALITY C-60 PLUS SERIES C-60 PLUS SERIES C-90						

TROUBLESHOOTING

Although some failures and breakdowns can be traced to legitimate mechanical faults, some are in fact the results of improper maintenance, tape defects or lack of experience in operating the tape deck. If you think that there is a failure, refer first to the following checklist.

Symptom	Cause	Remedy
Tape does not run.	<ol style="list-style-type: none"> 1. AC cord is not plugged in. 2. Tape has run out. 3. PAUSE lever is set to depress position. 4. Cassette is inserted improperly. 	<ol style="list-style-type: none"> 1. Plug cord in correctly. 2. Rewind tape. 3. Depress PAUSE lever to release. 4. Remove tape and insert properly.
High frequencies are weak.	<ol style="list-style-type: none"> 1. Heads are dirty. 2. TAPE selector is not set in accordance with tape during recording or playback. 3. A recorded tape without using the Dolby NR system is being played back with Dolby NR switch set to ON. 	<ol style="list-style-type: none"> 1. Clean heads. 2. Set TAPE selector correctly in accordance with tape. 3. Set Dolby NR switch to OFF.
No playback sound.	OUTPUT control is set to leftmost position.	Turn control to suitable position.
Playback sound is distorted.	<ol style="list-style-type: none"> 1. Playback level is too high. 2. Distortion is recorded on tape. 	<ol style="list-style-type: none"> 1. Reduce playback level. 2. Replace cassette tape.
Sound is unsteady.	<ol style="list-style-type: none"> 1. Dirty capstan. 2. Irregular cassette tape winding. 	<ol style="list-style-type: none"> 1. Clean capstan. 2. Replace tape.
Excessive noise.	<ol style="list-style-type: none"> 1. Tape is old. 2. Recorded tape using the Dolby NR system is being played back with Dolby NR switch set to OFF. 	<ol style="list-style-type: none"> 1. Replace tape. 2. Depress Dolby NR switch to ON.
Cannot record.	Cassette's erasure prevention tabs have been broken off.	Replace tape or cover tab openings with adhesive tape.
Recorded sound is distorted.	<ol style="list-style-type: none"> 1. Input level is too high. 2. Dirty heads. 	<ol style="list-style-type: none"> 1. Reduce input level. 2. Clean heads.