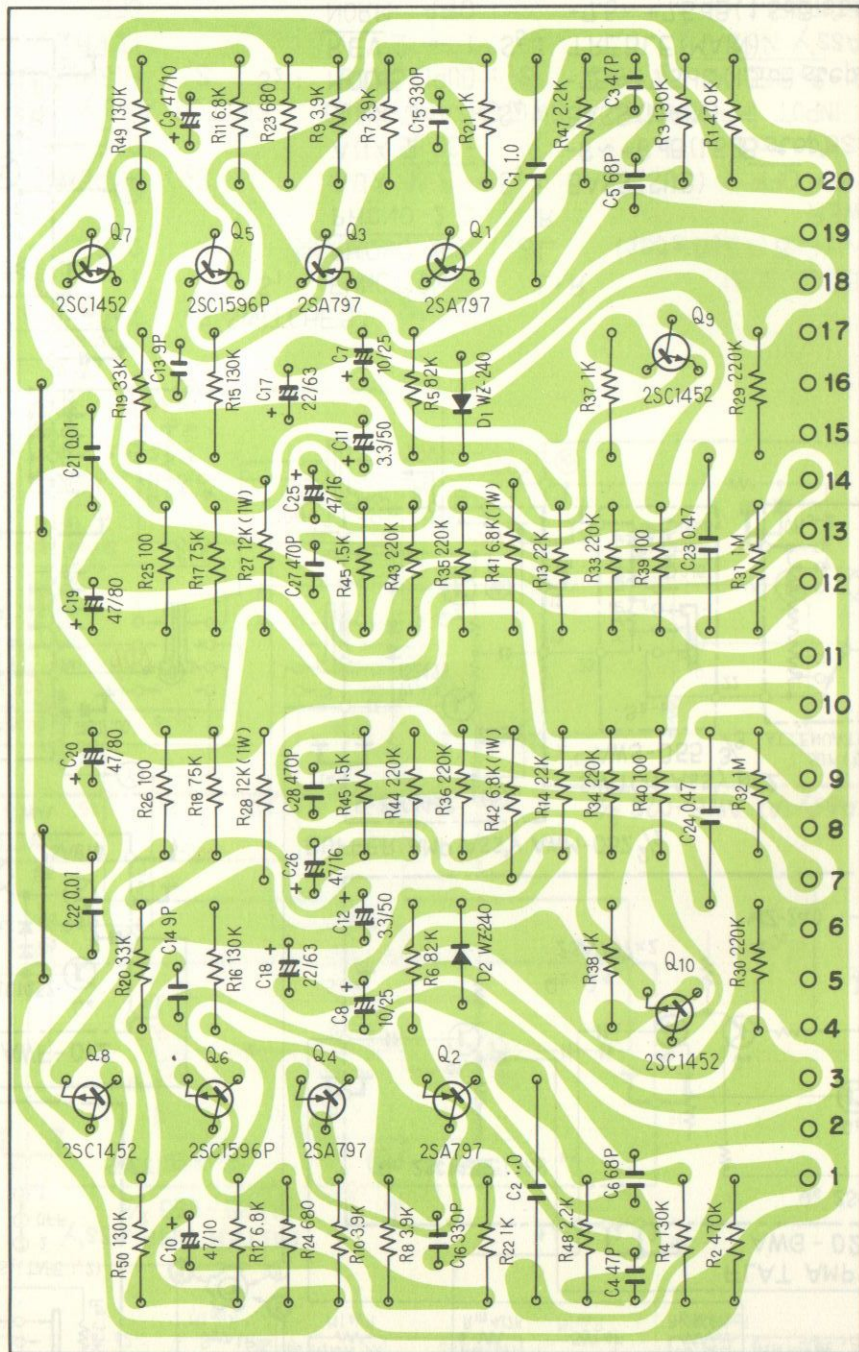


Stereo Preamplifier

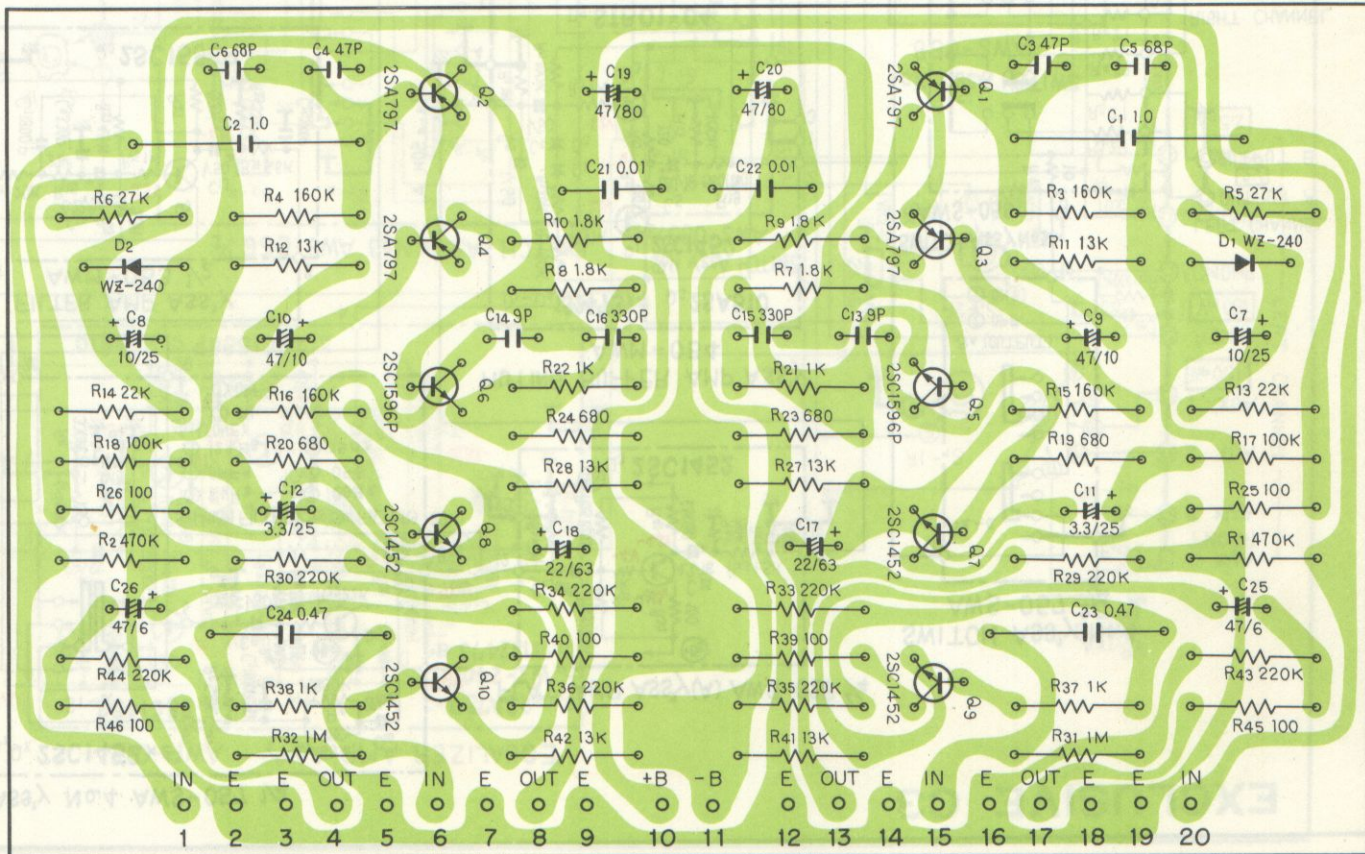
EXCLUSIVE C3

N

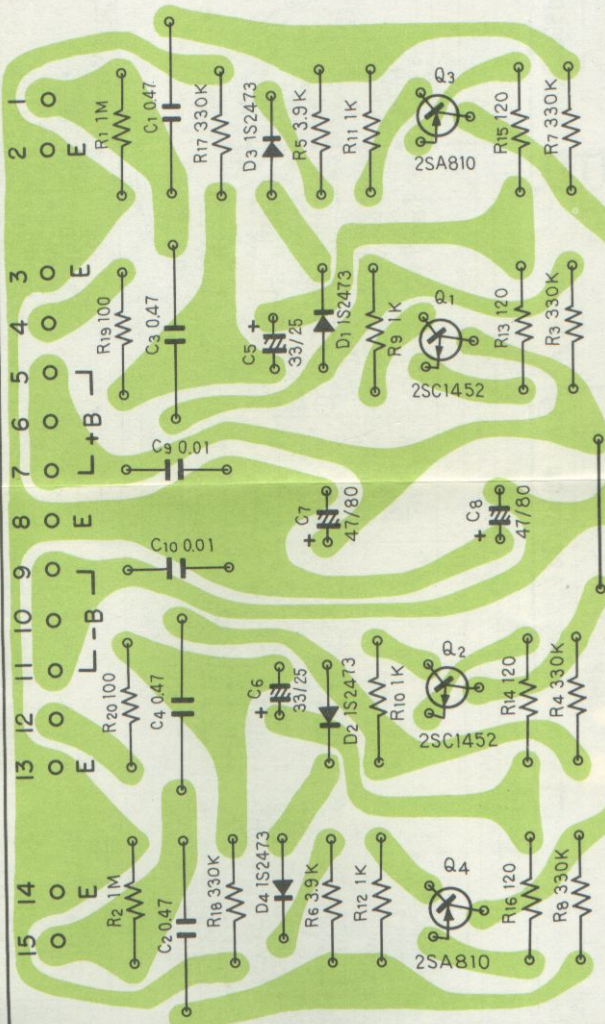
Flat amp ass'y A AWG-026



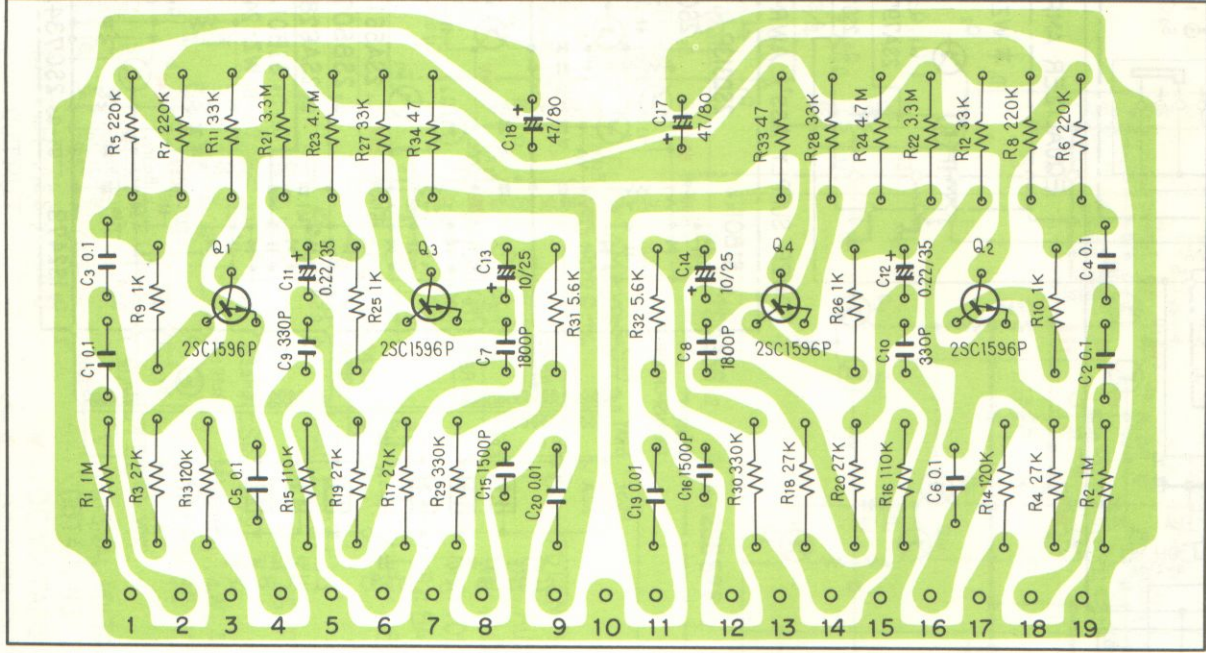
Flat amp ass'y BAWG-028



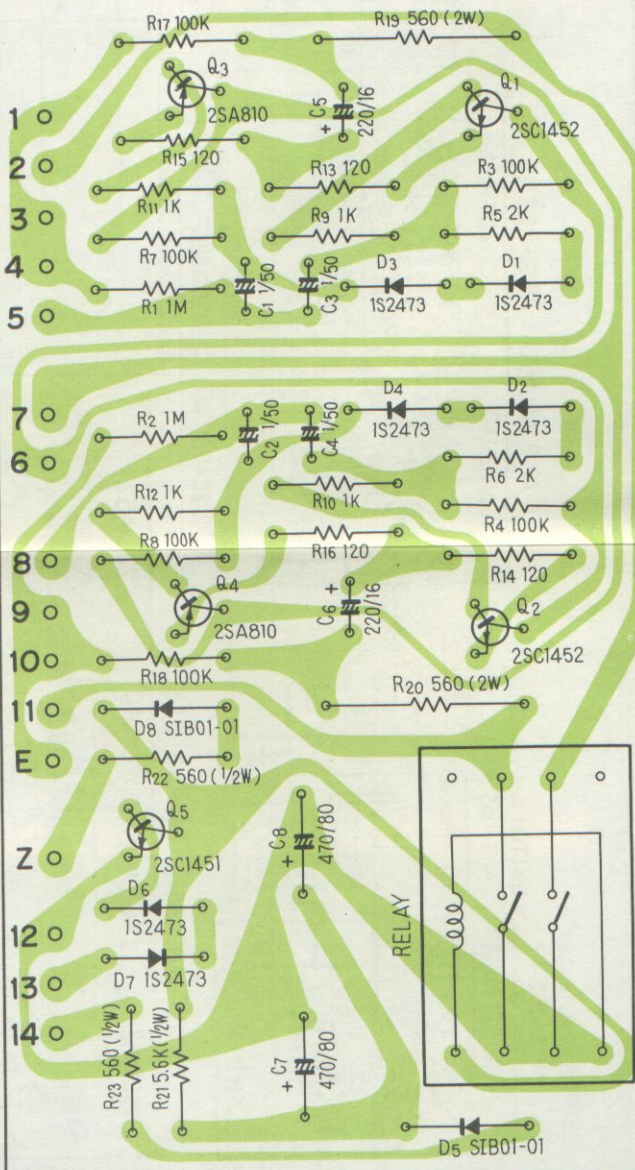
Buffer amp ass'y AWM-052



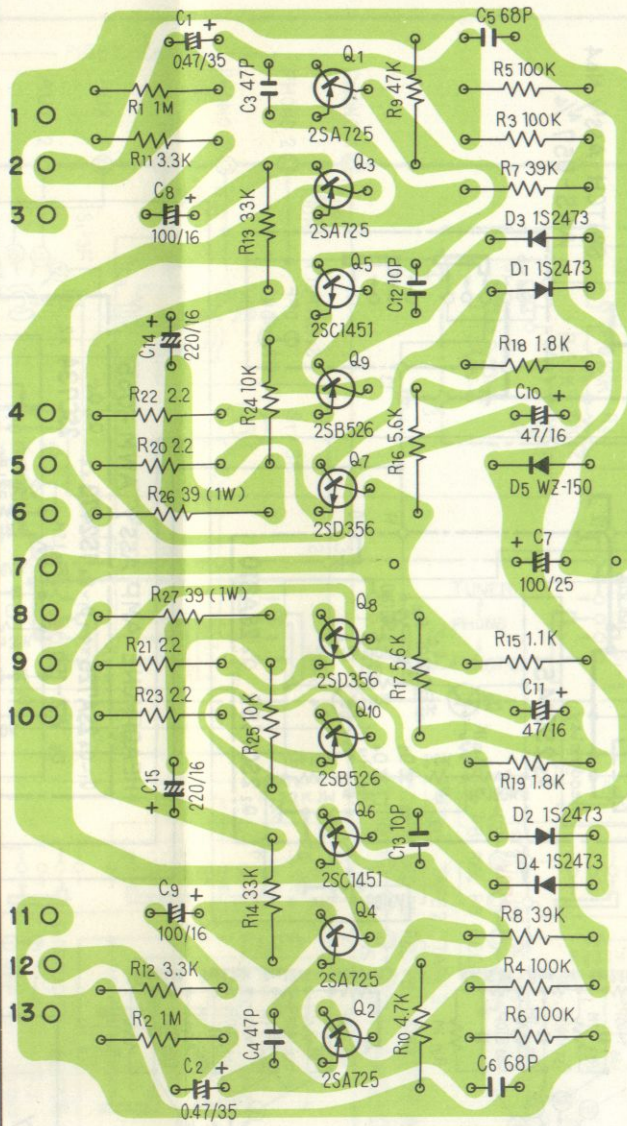
Filter amp ass'y AWM-053

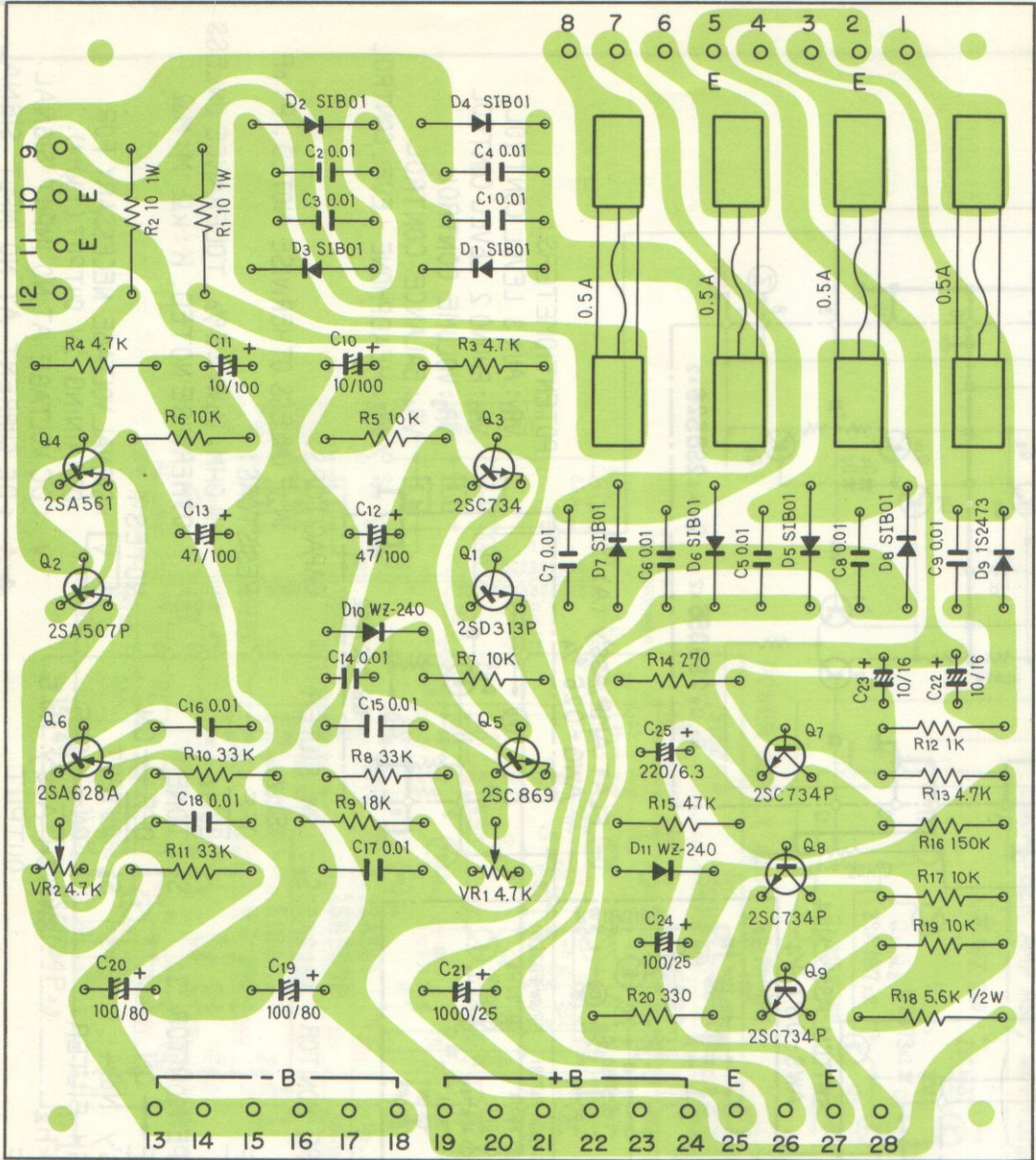


Muting buffer amp ass'y AWM-054

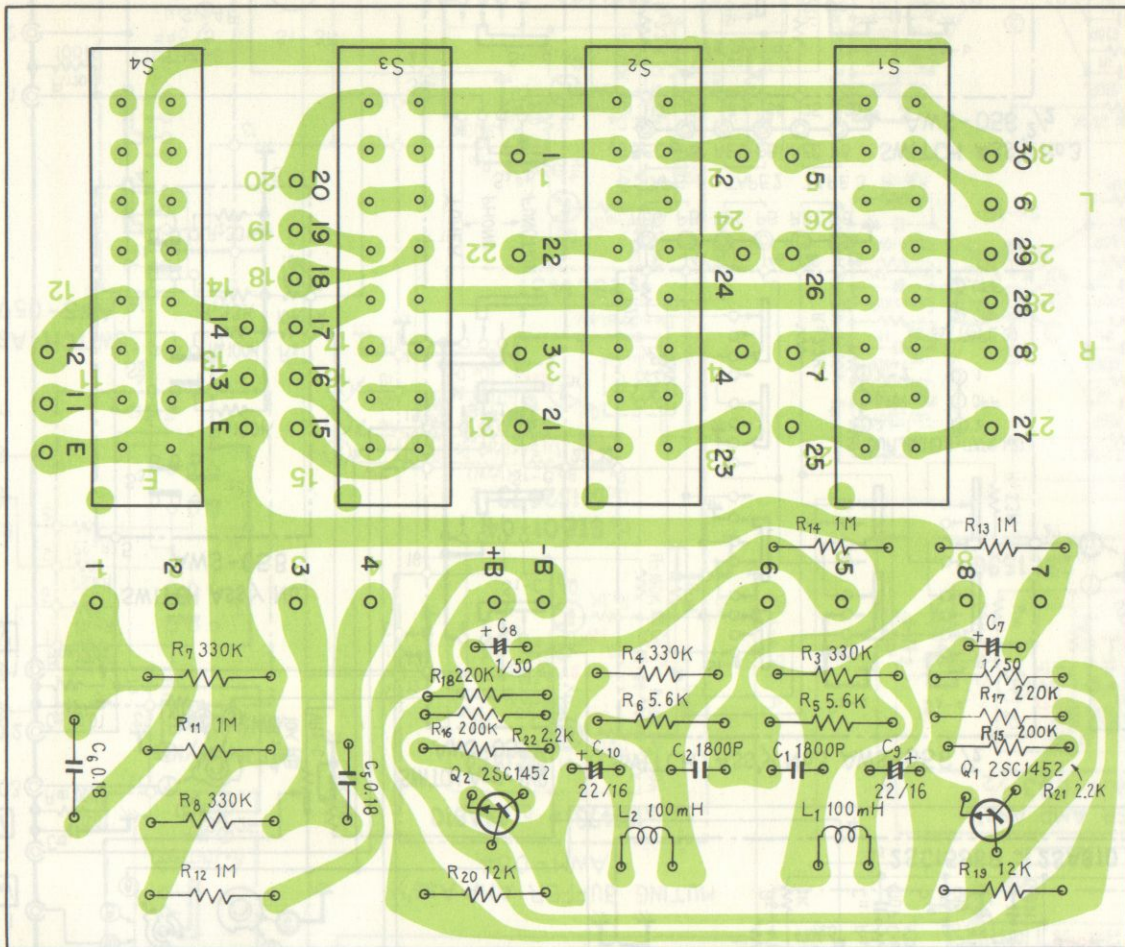


Headphone amp ass'y AWM-055

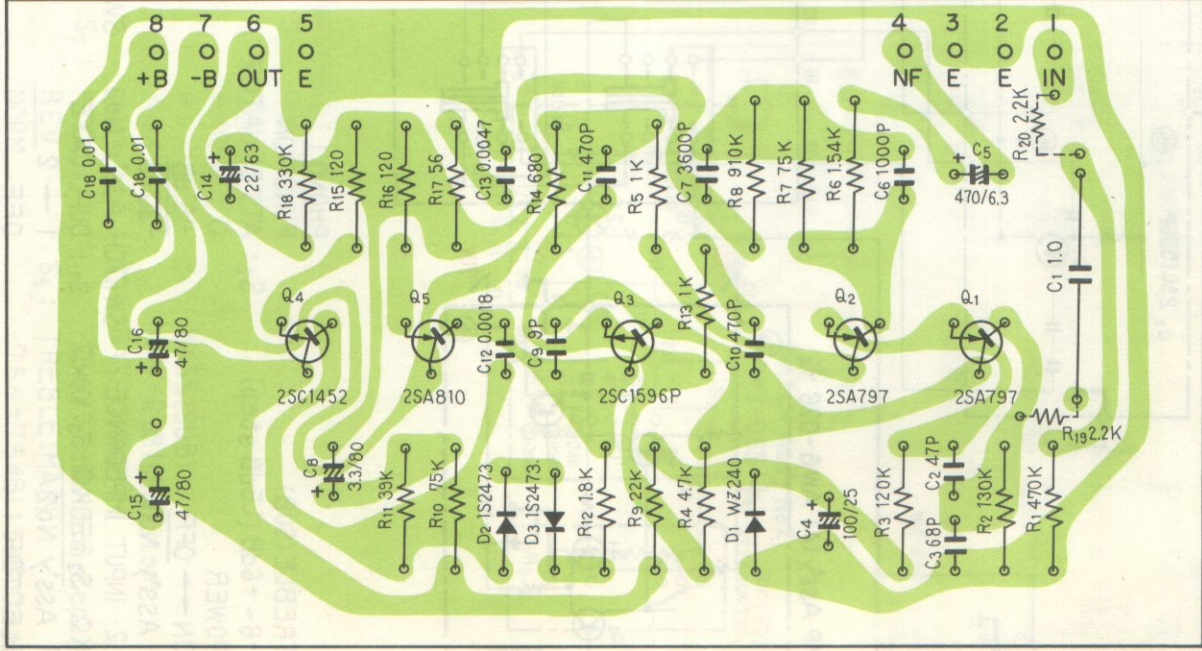




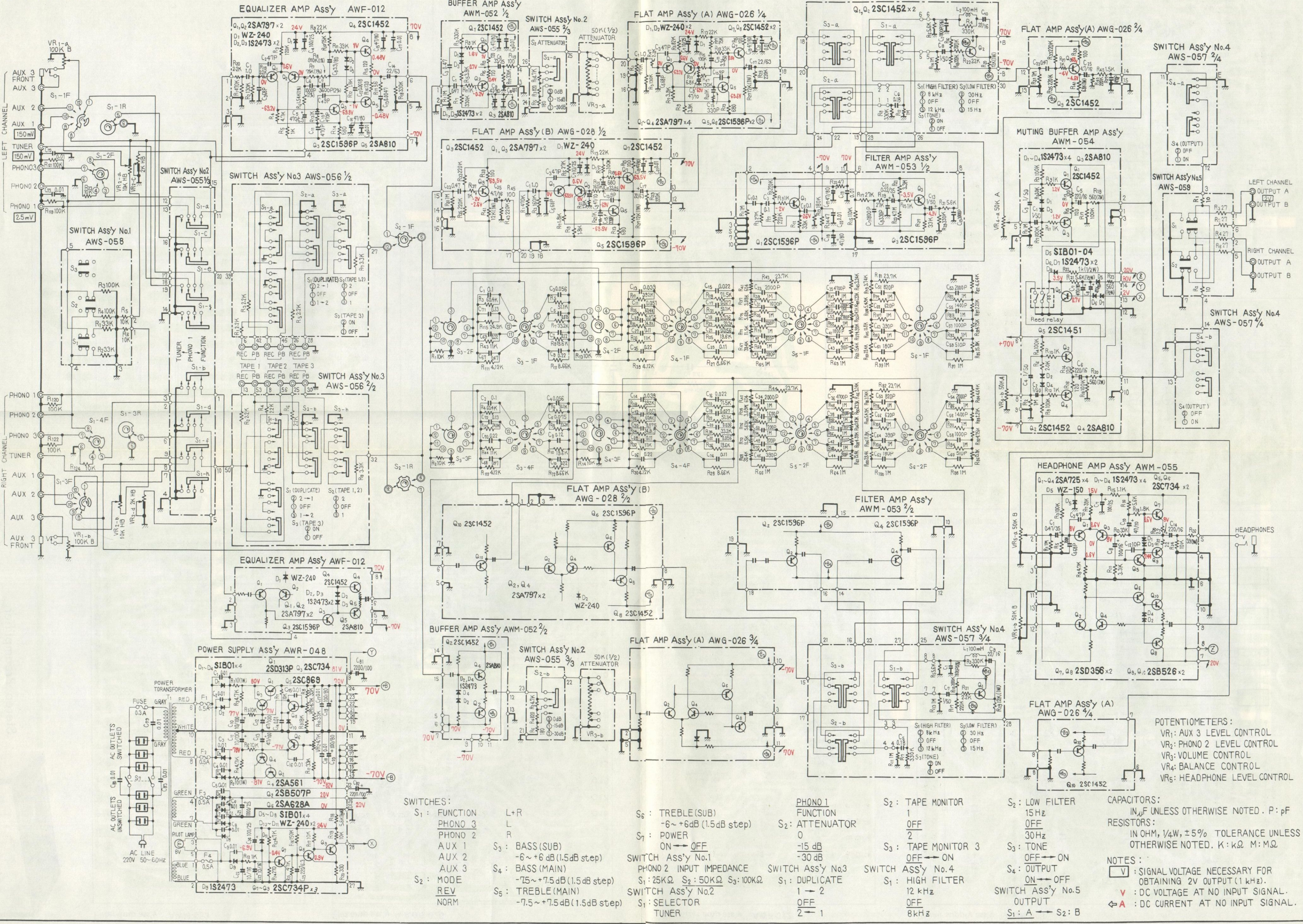
Switch ass'y No.4 AWS-057



Equalizer amp ass'y AWF-012



EXCLUSIVE C3



- SWITCHES:**
- S₁: FUNCTION L+R
 - PHONO 3 L
 - PHONO 2 R
 - AUX 1 S₃: BASS (SUB) -6 ~ +6 dB (1.5dB step)
 - AUX 2 S₄: BASS (MAIN) -7.5 ~ +7.5 dB (1.5dB step)
 - AUX 3 S₂: MODE
 - REV S₅: TREBLE (MAIN) -7.5 ~ +7.5 dB (1.5dB step)
 - NORM
 - S₆: TREBLE (SUB) -6 ~ +6 dB (1.5dB step)
 - S₇: POWER ON → OFF
 - SWITCH Ass'y No.1 PHONO 2 INPUT IMPEDANCE S₁: 25KΩ S₂: 50KΩ S₃: 100KΩ
 - SWITCH Ass'y No.2 S₁: SELECTOR
 - TUNER S₂: 1 → 2
 - PHONO 1 FUNCTION S₂: ATTENUATOR 0 -15 dB -30 dB
 - S₂: TAPE MONITOR 1 OFF 2 OFF 3 OFF → ON
 - SWITCH Ass'y No.3 S₁: DUPLICATE 1 → 2
 - SWITCH Ass'y No.4 S₁: HIGH FILTER 12 kHz OFF 2 OFF 3 OFF
 - S₂: LOW FILTER 15 Hz OFF 2 OFF 3 OFF
 - S₃: TONE OFF → ON
 - S₄: OUTPUT ON → OFF
 - SWITCH Ass'y No.5 OUTPUT S₁: A → S₂: B
- POTENTIOMETERS:**
- VR₁: AUX 3 LEVEL CONTROL
 - VR₂: PHONO 2 LEVEL CONTROL
 - VR₃: VOLUME CONTROL
 - VR₄: BALANCE CONTROL
 - VR₅: HEADPHONE LEVEL CONTROL
- CAPACITORS:**
IN μF UNLESS OTHERWISE NOTED. P: pF
- RESISTORS:**
IN OHM, 1/4W, ±5% TOLERANCE UNLESS OTHERWISE NOTED. K: kΩ M: MΩ
- NOTES:**
- V: SIGNAL VOLTAGE NECESSARY FOR OBTAINING 2V OUTPUT (1 kHz).
 - V: DC VOLTAGE AT NO INPUT SIGNAL.
 - A: DC CURRENT AT NO INPUT SIGNAL.